

PGK2 RABBIT PAB

Cat.#: S217107

Product Name: Anti-PGK2 Rabbit Polyclonal Antibody

Synonyms: PGKB; PGKPS; dJ417L20.2

UNIPROT ID: P07205 (Gene Accession - BC038843)

Background: This gene is intronless, arose via retrotransposition of the phosphoglycerate kinase 1 gene, and is expressed specifically in the testis. Initially assumed to be a pseudogene, the encoded protein is actually a functional phosphoglycerate kinase that catalyzes the reversible conversion of 1,3-bisphosphoglycerate to 3-phosphoglycerate, during the Embden-Meyerhof-Parnas pathway of glycolysis, in the later stages of spermatogenesis.

Immunogen: Fusion protein of human PGK2

Applications: ELISA, WB, IHC

Recommended Dilutions: IHC: 50-200;WB: 1000-5000;ELISA: 2000-10000

Host Species: Rabbit

Clonality: Rabbit Polyclonal

Isotype: Immunogen-specific rabbit IgG

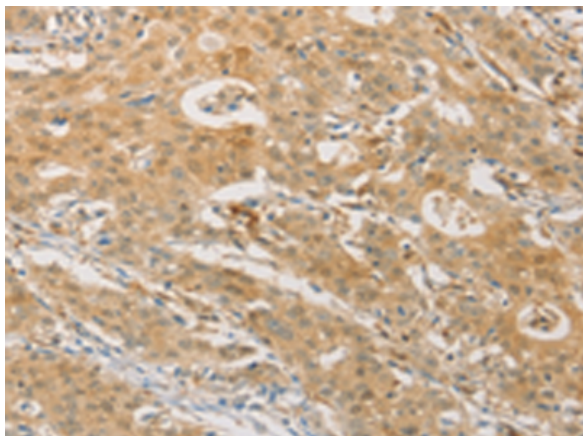
Purification: Antigen affinity purification

Species Reactivity: Human, Mouse, Rat

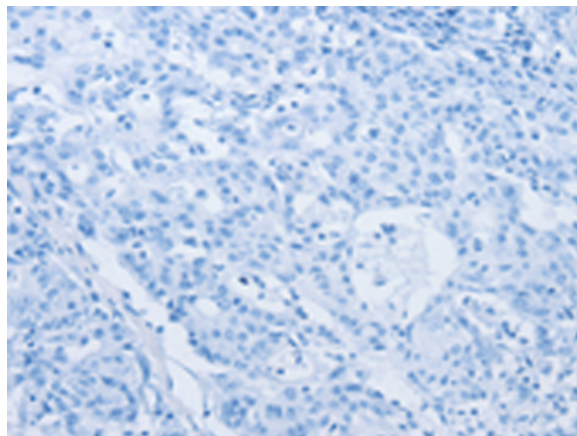
Constituents: PBS (without Mg²⁺ and Ca²⁺), pH 7.4, 150 mM NaCl, 0.05% Sodium Azide and 40% glycerol

Research Areas: Metabolism

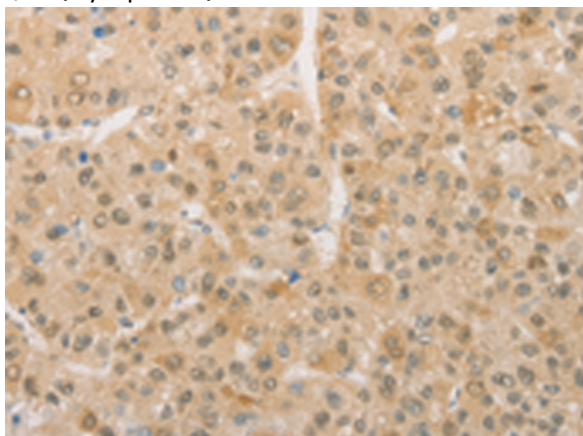
Storage & Shipping: Store at -20°C. Avoid repeated freezing and thawing



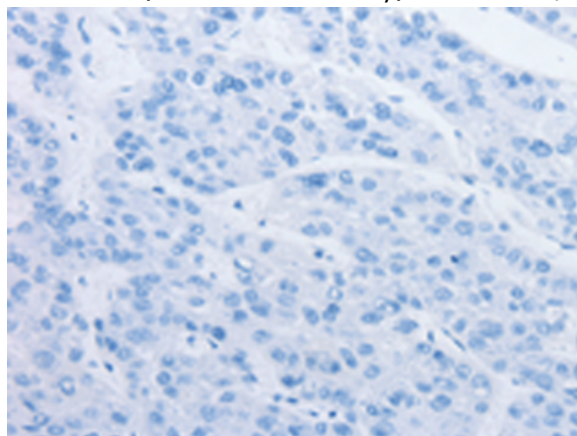
Immunohistochemistry analysis of paraffin embedded Human gastric cancer tissue using 217107(PGK2 Antibody) at a dilution of 1/50(Cytoplasm).



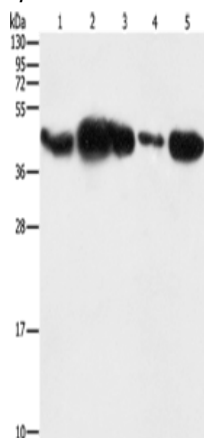
In comparison with the IHC on the left, the same paraffin-embedded Human gastric cancer tissue is first treated with the fusion protein and then with 217107(Anti-PGK2 Antibody) at dilution 1/50.



The image on the left is immunohistochemistry of paraffin-embedded Human liver cancer tissue using 217107(Anti-PGK2 Antibody) at a dilution of 1/50.



In comparison with the IHC on the left, the same paraffin-embedded Human liver cancer tissue is first treated with fusion protein and then with D221803(Anti-PGK2 Antibody) at dilution 1/50.



Gel: 10%SDS-PAGE, Lysate: 40 µg;
 Lane 1-5: HepG2 cells, human fetal placenta tissue,
 293T cells, human testis tissue, NIH/3T3 cells;
 Primary antibody: 217107(PGK2 Antibody) at
 dilution 1/600;
 Secondary antibody: Goat anti rabbit IgG at
 1/8000 dilution;
 Exposure time: 5 seconds



Product Description

Pioneering GTPase and Oncogene Product Development since 2010
