

PGM1 RABBIT MAB

Cat.#: N262706

Product Name: Anti-PGM1 Rabbit Monoclonal Antibody

Synonyms: Phosphoglucomutase-1; PGM 1; Glucose phosphomutase 1

UNIPROT ID: P36871

Background: This enzyme participates in both the breakdown and synthesis of glucose.

Immunogen: A synthetic peptide of human PGM1

Applications: WB, ICC/IF, IP

Recommended Dilutions: WB: 1/500-1/1000 IF: 1/50-1/200 IP: 1/20

Host Species: Rabbit

Clonality: Rabbit Monoclonal

Clone ID: R08-9G3

MW: Calculated MW: 61 kDa; Observed MW: 61 kDa

Isotype: IgG

Purification: Affinity Purified

Species Reactivity: Human, Mouse, Rat

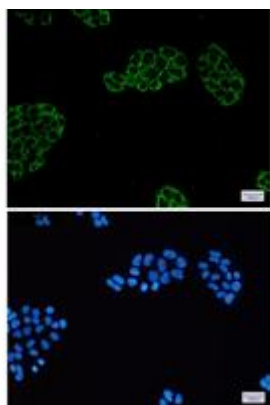
Conjugation: Unconjugated

Modification: Unmodified

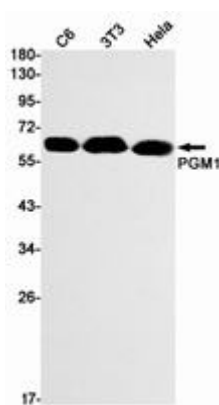
Constituents: PBS (without Mg²⁺ and Ca²⁺), pH 7.3 containing 50% glycerol, 0.5% BSA and 0.02% sodium azide

Research Areas: Signal Transduction

Storage & Shipping: Store at -20°C. Avoid repeated freezing and thawing



Immunocytochemistry analysis of PGM1 (green) in HeLa using PGM1 antibody, and DAPI (blue)



Western blot analysis of PGM1 in C6, 3T3, HeLa lysates using PGM1 antibody.



Product Description

Pioneering GTPase and Oncogene Product Development since 2010
