

PHAPI2 RABBIT MAB

Cat.#: N262708

Product Name: Anti-PHAPI2 Rabbit Monoclonal Antibody

Synonyms: ANP32B; PAL31; PHAPI2; PHAPI2 α ; Ssp29

UNIPROT ID: Q92688

Background: Multifunctional protein working as a cell cycle progression factor as well as a cell survival factor. Required for the progression from the G1 to the S phase.

Immunogen: A synthetic peptide of human PHAPI2

Applications: WB,IHC-F,IHC-P,ICC/IF

Recommended Dilutions: WB: 1/500-1/1000 IHC: 1/50-1/100 IF: 1/50-1/200

Host Species: Rabbit

Clonality: Rabbit Monoclonal

Clone ID: R03-6H2

MW: Calculated MW: 29 kDa; Observed MW: 29 kDa

Isotype: IgG

Purification: Affinity Purified

Species Reactivity: Human,Rat

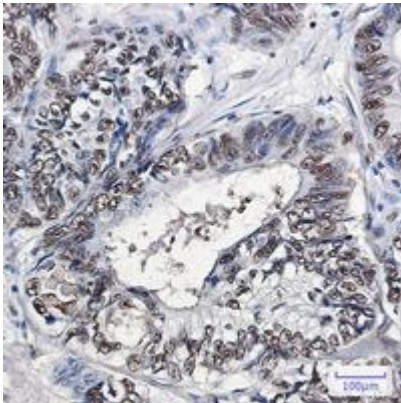
Conjugation: Unconjugated

Modification: Unmodified

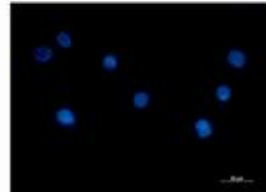
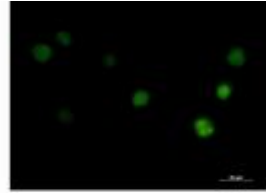
Constituents: PBS (without Mg²⁺ and Ca²⁺), pH 7.3 containing 50% glycerol, 0.5% BSA and 0.02% sodium azide

Research Areas: Cell Biology

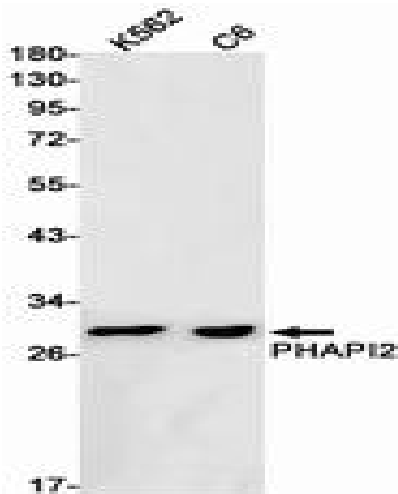
Storage & Shipping: Store at -20°C. Avoid repeated freezing and thawing



Immunohistochemistry analysis of paraffin-embedded Human colon cancer tissue using PHAPI2/APRIL antibody. High-pressure and temperature Sodium Citrate pH 6.0 was used for antigen retrieval.



Immunocytochemistry analysis of PHAPI2 (green) in K562 using PHAPI2 antibody, and DAPI (blue).



Western blot analysis of PHAPI2 in K562, C6 lysates using PHAPI2 antibody.