

PHC1 (8G5) MOUSE MAB

Cat.#: N261204

Product Name: Anti-PHC1 (8G5) Mouse Monoclonal Antibody

Synonyms: EDRI; HPHI; RAE28

UNIPROT ID: P78364

Background: This gene is a homolog of the Drosophila polyhomeotic gene, which is a member of the Polycomb group of genes. The gene product is a component of a multimeric protein complex that contains EDR2 and the vertebrate Polycomb protein BMH1. The gene product, the EDR2 protein, and the Drosophila polyhomeotic protein share 2 highly conserved domains, named homology domains I and II. These domains are involved in protein-protein interactions and may mediate heterodimerization of the protein encoded by this gene and the EDR2 protein.

Immunogen: Purified recombinant fragment of human PHC1 (AA: 758-1004) expressed in E. Coli.

Applications: FC

Recommended Dilutions: FC: 1/100

Host Species: Mouse

Clonality: Mouse Monoclonal

Clone ID: 8G5-1E6-3G7

MW: -

Isotype: IgG1

Purification: Affinity Purified

Species Reactivity: Human

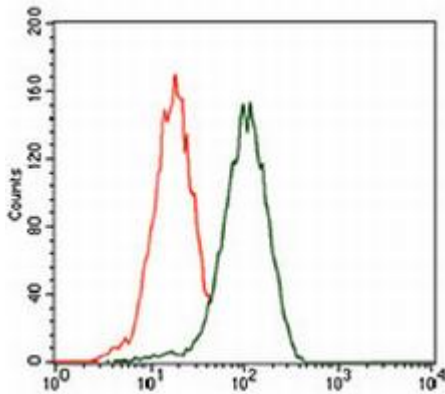
Conjugation: Unconjugated

Modification: Unmodified

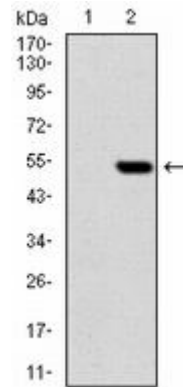
Constituents: PBS (without Mg²⁺ and Ca²⁺), pH 7.3 containing 50% glycerol, 0.5% BSA and 0.02% sodium azide

Research Areas: Epigenetics and Nuclear Signaling

Storage & Shipping: Store at -20°C. Avoid repeated freezing and thawing



Flow cytometry analysis of HEK293 stained with PHC1 antibody (green) and negative control (red).



Western blot analysis of HEK293 (1) and PHC1 (AA: 7581004)hIgGfc transfected HEK293 (2) lysates using PHC1 antibody.