

PHF21A RABBIT PAB

Cat.#: S218360

Product Name: Anti-PHF21A Rabbit Polyclonal Antibody

Synonyms: BHC80; BM-006

UNIPROT ID: Q96BD5 (Gene Accession - BC015714)

Background: Zinc-finger proteins contain DNA-binding domains and have a wide variety of functions, most of which encompass some form of transcriptional activation or repression. PHF21A (PHD finger protein 21A), also known as BRAF35-HDAC complex protein BHC80, is a 680 amino acid nuclear protein that contains one PHD-type zinc finger and one A.T hook DNA-binding domain, suggesting involvement in transcriptional regulation events. PHF21A is a component of the BHC complex which is responsible for repressing transcription of neuron-specific genes in non-neuronal cells. The BHC complex acts as a chromatin modifier that deacetylates and demethylates specific sites on histones. PHF21A may act as a scaffold within the BHC complex. Predominantly expressed in brain, three isoforms of PHF21A exist as a result of alternative splicing events.

Immunogen: Fusion protein of human PHF21A

Applications: ELISA, WB, IHC

Recommended Dilutions: IHC: 40-200;WB: 500-2000;ELISA: 5000-10000

Host Species: Rabbit

Clonality: Rabbit Polyclonal

Isotype: Immunogen-specific rabbit IgG

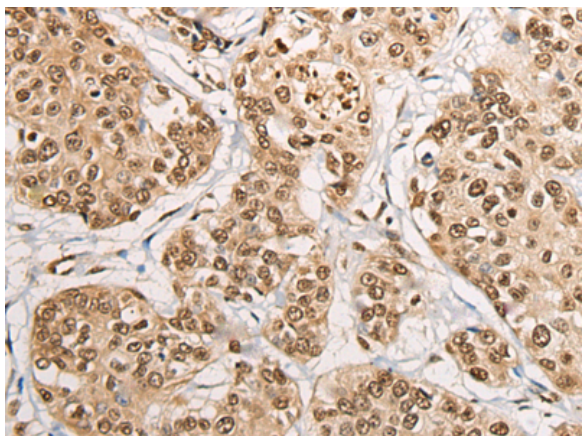
Purification: Antigen affinity purification

Species Reactivity: Human, Mouse

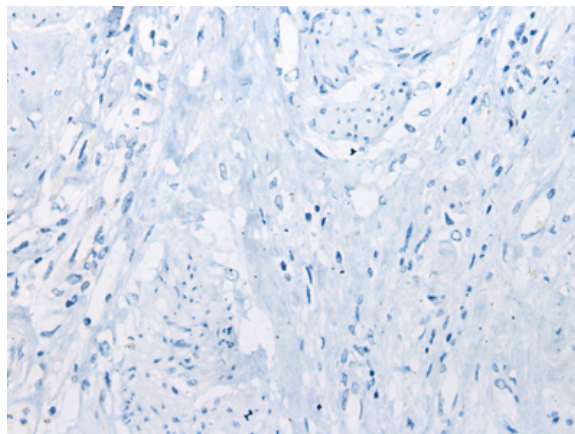
Constituents: PBS (without Mg²⁺ and Ca²⁺), pH 7.4, 150 mM NaCl, 0.05% Sodium Azide and 40% glycerol

Research Areas: Epigenetics and Nuclear Signaling, Neuroscience

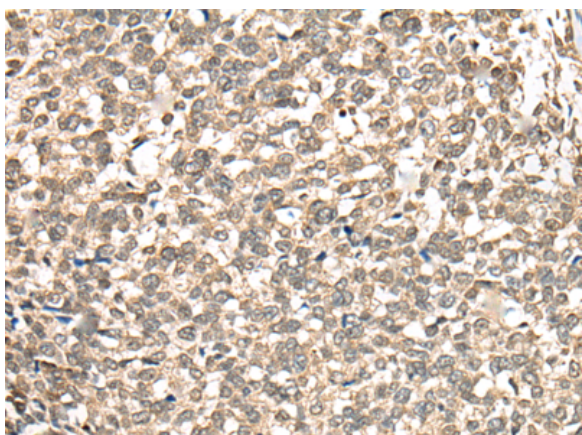
Storage & Shipping: Store at -20°C. Avoid repeated freezing and thawing



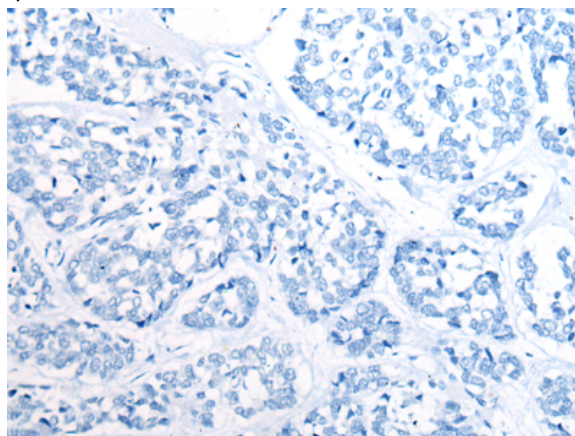
Immunohistochemistry analysis of paraffin embedded Human prostate cancer tissue using 218360 (PHF21A Antibody) at a dilution of 1/50 (Cytoplasm and Nucleus).



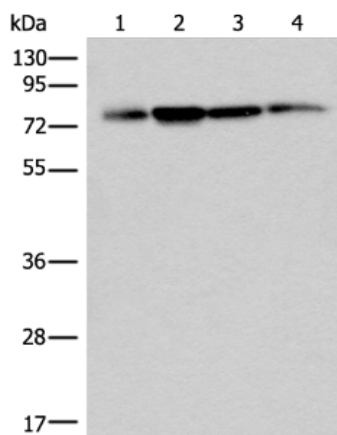
In comparison with the IHC on the left, the same paraffin-embedded Human prostate cancer tissue is first treated with the fusion protein and then with 218360 (Anti-PHF21A Antibody) at dilution 1/50.



The image on the left is immunohistochemistry of paraffin-embedded Human esophagus cancer tissue using 218360 (Anti-PHF21A Antibody) at a dilution of 1/50.



In comparison with the IHC on the left, the same paraffin-embedded Human esophagus cancer tissue is first treated with fusion protein and then with D224255 (Anti-PHF21A Antibody) at dilution 1/50.



Gel: 8%SDS-PAGE, Lysate: 40 µg;
Lane 1-4: A172, 293T, Hela and A375 cell lysates;
Primary antibody: 218360 (PHF21A Antibody) at dilution 1/400;
Secondary antibody: Goat anti rabbit IgG at 1/8000 dilution;
Exposure time: 3 seconds



Product Description

Pioneering GTPase and Oncogene Product Development since 2010
