

## PHLDA3 RABBIT PAB

**Cat.#:** S219195

**Product Name:** Anti-PHLDA3 Rabbit Polyclonal Antibody

**Synonyms:** TIH1

**UNIPROT ID:** Q9Y5J5 (Gene Accession - BC014390 )

**Background:** p53/TP53-regulated repressor of Akt/AKT1 signaling. Represses AKT1 by preventing AKT1-binding to membrane lipids, thereby inhibiting AKT1 translocation to the cellular membrane and activation. Contributes to p53/TP53-dependent apoptosis by repressing AKT1 activity. Its direct transcription regulation by p53/TP53 may explain how p53/TP53 can negatively regulate AKT1. May act as a tumor suppressor.

**Immunogen:** Fusion protein of human PHLDA3

**Applications:** ELISA, IHC

**Recommended Dilutions:** IHC: 100-300; ELISA: 5000-10000

**Host Species:** Rabbit

**Clonality:** Rabbit Polyclonal

**Isotype:** Immunogen-specific rabbit IgG

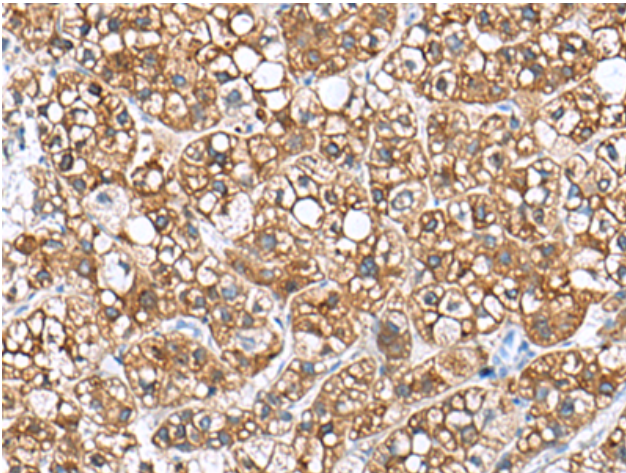
**Purification:** Antigen affinity purification

**Species Reactivity:** Human, Mouse, Rat

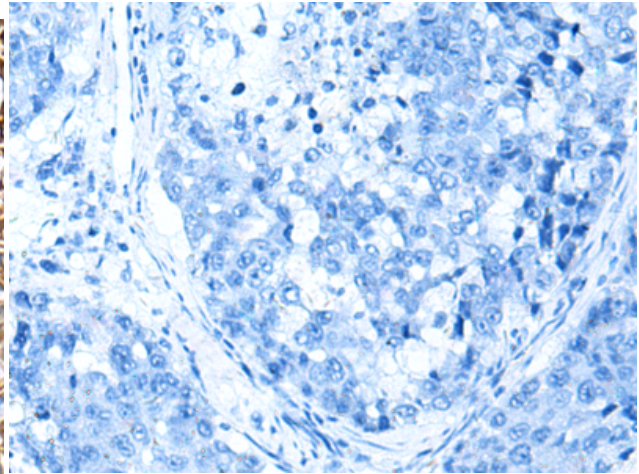
**Constituents:** PBS (without Mg<sup>2+</sup> and Ca<sup>2+</sup>), pH 7.4, 150 mM NaCl, 0.05% Sodium Azide and 40% glycerol

**Research Areas:** Cell Biology

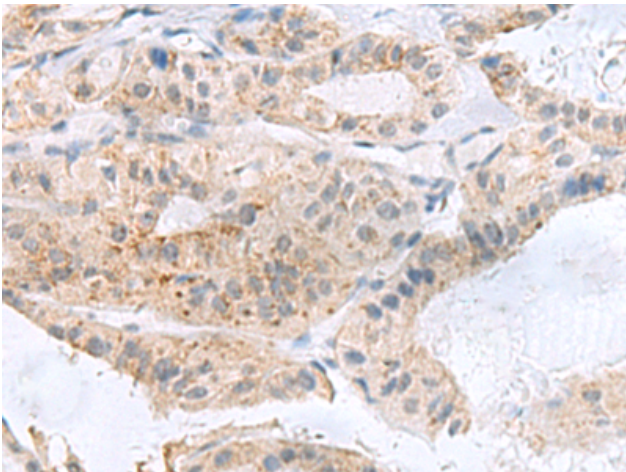
**Storage & Shipping:** Store at -20°C. Avoid repeated freezing and thawing



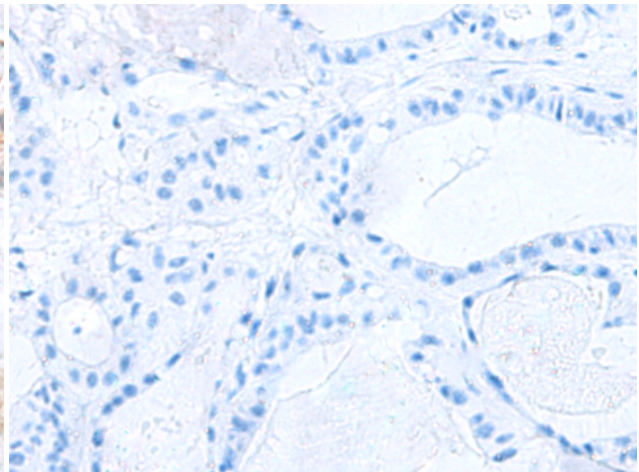
Immunohistochemistry analysis of paraffin embedded Human liver cancer tissue using 219195(PhLDA3 Antibody) at a dilution of 1/110(Cytoplasm).



In comparison with the IHC on the left, the same paraffin-embedded Human liver cancer tissue is first treated with the fusion protein and then with 219195(Anti-PhLDA3 Antibody) at dilution 1/110.



The image on the left is immunohistochemistry of paraffin-embedded Human thyroid cancer tissue using 219195(Anti-PhLDA3 Antibody) at a dilution of 1/110.



In comparison with the IHC on the left, the same paraffin-embedded Human thyroid cancer tissue is first treated with fusion protein and then with D226034(Anti-PhLDA3 Antibody) at dilution 1/110.