

PHOSPHO-ATF2 (THR71) RABBIT MAB

Cat.#: N261883

Product Name: Anti-Phospho-ATF2 (Thr71) Rabbit Monoclonal Antibody

Synonyms: ATF2; CREB2; CREBP1; Cyclic AMP-dependent transcription factor ATF-2; cAMP-dependent transcription factor ATF-2; Activating transcription factor 2; Cyclic AMP-responsive element-binding protein 2; CREB-2; cAMP-responsive element-binding pro

UNIPROT ID: P15336

Background: This gene encodes a transcription factor that is a member of the leucine zipper family of DNA binding proteins. This protein binds to the cAMP-responsive element (CRE), an octameric palindrome. The protein forms a homodimer or heterodimer with c-Jun and stimulates CRE-dependent transcription. The protein is also a histone acetyltransferase (HAT) that specifically acetylates histones H2B and H4 in vitro;

Immunogen: A synthetic phosphopeptide corresponding to residues surrounding Thr71 of human ATF2

Applications: WB, ICC/IF, IP

Recommended Dilutions: WB: 1/500-1/1000 IF: 1/50-1/200 IP: 1/20

Host Species: Rabbit

Clonality: Rabbit Monoclonal

Clone ID: R07-3E5

MW: Calculated MW: 55 kDa; Observed MW: 70 kDa

Isotype: IgG

Purification: Affinity Purified

Species Reactivity: Human, Mouse

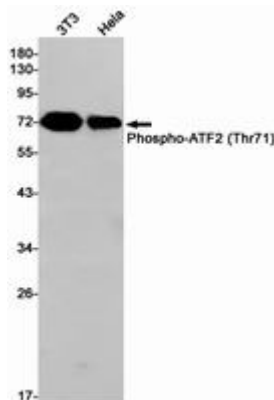
Conjugation: Unconjugated

Modification: Phosphorylated

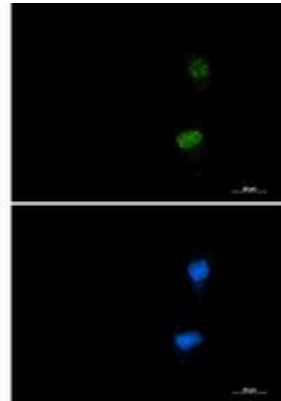
Constituents: PBS (without Mg²⁺ and Ca²⁺), pH 7.3 containing 50% glycerol, 0.5% BSA and 0.02% sodium azide

Research Areas: Epigenetics and Nuclear Signaling

Storage & Shipping: Store at -20°C. Avoid repeated freezing and thawing



Western blot analysis of Phospho-ATF2 (Thr71) in 3T3, Hela lysates using Phospho-ATF2 (Thr71) antibody.



Immunocytochemistry analysis of Phospho-ATF2 (Thr71) (green) in U87-MG using Phospho-ATF2 (Thr71) antibody, and DAPI (blue).