

## PHOSPHO-BETA CATENIN (SER37) RABBIT PAB

**Cat.#:** N225377

**Product Name:** Anti-Phospho-beta Catenin (Ser37) Rabbit pAb

**Synonyms:** CTNNB1; CTNNB; OK/SW-cl.35; Catenin beta-1; Beta-catenin

**UNIPROT ID:** P35222

**Background:** Beta-catenin is an adherens junction protein. Adherens junctions (AJs; also called the zonula adherens) are critical for the establishment and maintenance of epithelial layers, such as those lining organ surfaces. AJs mediate adhesion between cells, communicate a signal that neighboring cells are present, and anchor the actin cytoskeleton. In serving these roles, AJs regulate normal cell growth and behavior.

**Immunogen:** The antiserum was produced against synthesized peptide derived from human Catenin-beta around the phosphorylation site of Ser37. AA range:3-52

**Applications:** WB,IHC-F,IHC-P,ICC/IF,ELISA

**Recommended Dilutions:** WB: 1/500-1/1000 IHC: 1/50-1/100 IF: 1/50-1/200  
ELISA: 1/10000

**Host Species:** Rabbit

**Clonality:** Rabbit Polyclonal

**Clone ID:** -

**MW:** Calculated MW: 85 kDa; Observed MW: 85 kDa

**Isotype:** IgG

**Purification:** Affinity Purified

**Species Reactivity:** Human,Mouse,Rat

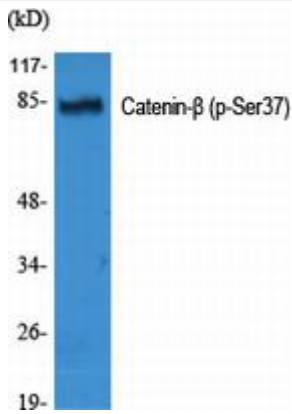
**Conjugation:** Unconjugated

**Modification:** Phosphorylated

**Constituents:** PBS (without Mg<sup>2+</sup> and Ca<sup>2+</sup>), pH 7.3 containing 50% glycerol, 0.5% BSA and 0.02% sodium azide

**Research Areas:** Cell Biology

**Storage & Shipping:** Store at -20°C. Avoid repeated freezing and thawing



Western blot analysis of Phospho-beta Catenin (Ser37) in various lysates using Phospho-beta Catenin (Ser37) antibody.