

PHOSPHO-C-MET (TYR1349) RABBIT MAB

Cat.#: N263178

Product Name: Anti-Phospho-c-Met (Tyr1349) Rabbit Monoclonal Antibody

Synonyms: MET; Hepatocyte growth factor receptor; HGF receptor; HGF/SF receptor; Proto-oncogene c-Met; Scatter factor receptor; SF receptor; Tyrosine-protein kinase Met

UNIPROT ID: P08581

Background: The proto-oncogene MET product is the hepatocyte growth factor receptor and encodes tyrosine-kinase activity. The primary single chain precursor protein is post-translationally cleaved to produce the alpha and beta subunits, which are disulfide linked to form the mature receptor.

Immunogen: A synthetic phosphopeptide corresponding to residues surrounding Tyr1349 of human Met

Applications: WB,IP

Recommended Dilutions: WB: 1/500-1/1000 IP: 1/20

Host Species: Rabbit

Clonality: Rabbit Monoclonal

Clone ID: R05-3D6

MW: Calculated MW: 156 kDa; Observed MW: 170,140 kDa

Isotype: IgG

Purification: Affinity Purified

Species Reactivity: Human

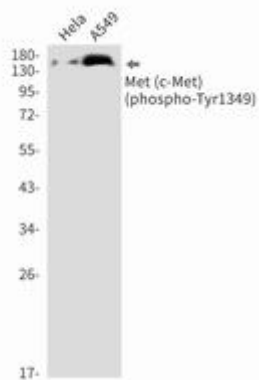
Conjugation: Unconjugated

Modification: Phosphorylated

Constituents: PBS (without Mg²⁺ and Ca²⁺), pH 7.3 containing 50% glycerol, 0.5% BSA and 0.02% sodium azide

Research Areas: Signal Transduction

Storage & Shipping: Store at -20°C. Avoid repeated freezing and thawing



Western blot analysis of Phospho-Met (c-Met) (Tyr1349) in HeLa, A549 lysates using Phospho-c-Met (Tyr1349) antibody.