

## PHOSPHO-CD18 (SER745) RABBIT MAB

**Cat.#:** N261985

**Product Name:** Anti-Phospho-CD18 (Ser745) Rabbit Monoclonal Antibody

**Synonyms:** ITGB2; CD18; MFI7; Integrin beta-2; Cell surface adhesion glycoproteins LFA-1/CR3/p150; 95 subunit beta; Complement receptor C3 subunit beta; CD antigen CD18

**UNIPROT ID:** P05107

**Background:** Integrin alpha-X/beta-2 recognizes the sequence G-P-R in fibrinogen alpha-chain. Integrin alpha-M/beta-2 recognizes P1 and P2 peptides of fibrinogen gamma chain. Integrin alpha-M/beta-2 is also a receptor for factor X. Integrin alpha-D/beta-2 is a receptor for ICAM3 and VCAM1.

**Immunogen:** A synthetic phosphopeptide corresponding to residues surrounding Ser745 of human CD18

**Applications:** WB,IP

**Recommended Dilutions:** WB: 1/500-1/1000 IP: 1/20

**Host Species:** Rabbit

**Clonality:** Rabbit Monoclonal

**Clone ID:** R01-4B6

**MW:** Calculated MW: 85 kDa; Observed MW: 85 kDa

**Isotype:** IgG

**Purification:** Affinity Purified

**Species Reactivity:** Human,Mouse,Rat

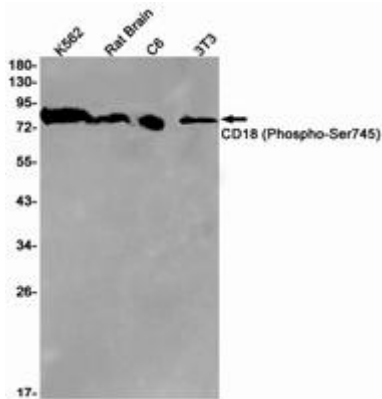
**Conjugation:** Unconjugated

**Modification:** Phosphorylated

**Constituents:** PBS (without Mg<sup>2+</sup> and Ca<sup>2+</sup>), pH 7.3 containing 50% glycerol, 0.5% BSA and 0.02% sodium azide

**Research Areas:** Tags & Cell Markers

**Storage & Shipping:** Store at -20°C. Avoid repeated freezing and thawing



Western blot analysis of CD18 (Phospho-Ser745) in K562, rat Brain, C6, 3T3 lysates using Phospho-CD18 (Ser745) antibody.