

PHOSPHO-CD3 ZETA (TYR142) RABBIT MAB

Cat.#: N261994

Product Name: Anti-Phospho-CD3 zeta (Tyr142) Rabbit Monoclonal Antibody

Synonyms: CD247; CD3Z; T3Z; TCRZ; T-cell surface glycoprotein CD3 zeta chain; T-cell receptor T3 zeta chain; CD antigen CD247

UNIPROT ID: P20963

Background: Defects in CD3D are a cause of severe combined immunodeficiency autosomal recessive T-cell-negative/B-cell-positive/NK-cell-positive (T(-)/B(+)/NK(+)) SCID [MIM:608971]. A form of severe combined immunodeficiency (SCID), a genetically and clinically heterogeneous group of rare congenital disorders characterized by impairment of both humoral and cell-mediated immunity, leukopenia, and low or absent antibody levels.

Immunogen: A synthetic phosphopeptide corresponding to residues surrounding Tyr142 of human CD3 zeta

Applications: WB,IP

Recommended Dilutions: WB: 1/500-1/1000 IP: 1/20

Host Species: Rabbit

Clonality: Rabbit Monoclonal

Clone ID: R03-715

MW: Calculated MW: 19 kDa; Observed MW: 19 kDa

Isotype: IgG

Purification: Affinity Purified

Species Reactivity: Human

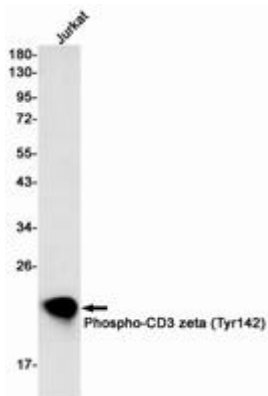
Conjugation: Unconjugated

Modification: Phosphorylated

Constituents: PBS (without Mg²⁺ and Ca²⁺), pH 7.3 containing 50% glycerol, 0.5% BSA and 0.02% sodium azide

Research Areas: Immunology

Storage & Shipping: Store at -20°C. Avoid repeated freezing and thawing



Western blot analysis of Phospho-CD3 zeta (Tyr142) in Jurkat lysates using Phospho-CD3 zeta (Tyr142) antibody.