

PHOSPHO-CD31 (TYR713) RABBIT PAB

Cat.#: N225490

Product Name: Anti-Phospho-CD31 (Tyr713) Rabbit pAb

Synonyms: Platelet endothelial cell adhesion molecule; PECAM-1; EndoCAM; GPIIA¹; PECA1; CD antigen CD31

UNIPROT ID: P16284

Background: PECAM-1 a cell adhesion molecule expressed on platelets and at endothelial cell intercellular junctions. Plays a role in modulation of integrin-mediated cell adhesion, transendothelial migration, angiogenesis, apoptosis, cell migration, negative regulation of immune cell signaling, autoimmunity, macrophage phagocytosis, IgE-mediated anaphylaxis and thrombosis. Undergoes alternative splicing, generating multiple isoforms in vascular beds of various tissues.

Immunogen: The antiserum was produced against synthesized peptide derived from human PECAM-1 around the phosphorylation site of Tyr713. AA range:686-735

Applications: ELISA,IHC-F,IHC-P,WB,ICC/IF

Recommended Dilutions: WB: 1/500-1/1000 IHC: 1/50-1/100 IF: 1/50-1/200 ELISA: 1/10000

Host Species: Rabbit

Clonality: Rabbit Polyclonal

Clone ID: -

MW: Calculated MW: 83 kDa; Observed MW: 150 kDa

Isotype: IgG

Purification: Affinity Chromatography

Species Reactivity: Human,Mouse

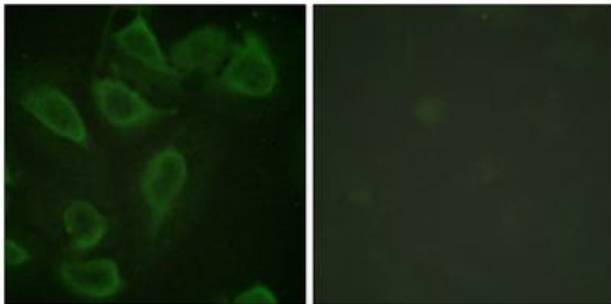
Conjugation: Unconjugated

Modification: Phosphorylated

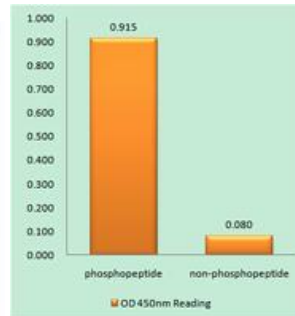
Constituents: PBS (without Mg²⁺ and Ca²⁺), pH 7.3 containing 50% glycerol, 0.5% BSA and 0.02% sodium azide

Research Areas: Cardiovascular

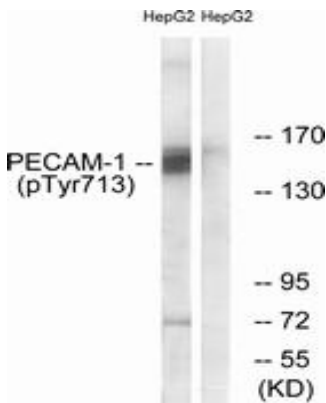
Storage & Shipping: Store at -20°C. Avoid repeated freezing and thawing



Immunofluorescence analysis of Phospho-CD31 (Tyr713) in HeLa using Phospho-CD31 (Tyr713) antibody. The picture on the right is blocked with the Phospho-peptide.



EnzymeLinked Immunosorbent Assay (Phospho-ELISA) for Immunogen Phospho-peptide (Phospho-left) and NonPhospho-peptide (Phospho-right), using PECAM1 (Phospho-Tyr71antibody)



Western blot analysis of Phospho-CD31 (Tyr713) in HepG2 lysates using Phospho-CD31 (Tyr713) antibody. The lane on the right is blocked with the Phospho-peptide.