

PHOSPHO-CDC25C (SER198) RABBIT PAB

Cat.#: N225312

Product Name: Anti-Phospho-CDC25C (Ser198) Rabbit pAb

Synonyms: CDC25C; M-phase inducer phosphatase 3; Dual specificity phosphatase Cdc25C

UNIPROT ID: P30307

Background: Functions as a dosage-dependent inducer in mitotic control. It is a tyrosine protein phosphatase required for progression of the cell cycle. It directly dephosphorylates CDK1 and activate its kinase activity.

Immunogen: Synthetic peptide of human CDC25C

Applications: IHC-P

Recommended Dilutions: IHC: 1/50-1/100

Host Species: Rabbit

Clonality: Rabbit Polyclonal

Clone ID: -

MW: -

Isotype: IgG

Purification: Affinity Purified

Species Reactivity: Human

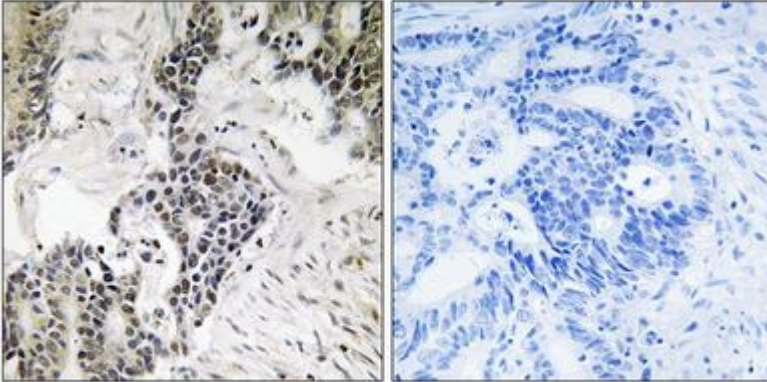
Conjugation: Unconjugated

Modification: Phosphorylated

Constituents: PBS (without Mg²⁺ and Ca²⁺), pH 7.3 containing 50% glycerol, 0.5% BSA and 0.02% sodium azide

Research Areas: Cell Biology

Storage & Shipping: Store at -20°C. Avoid repeated freezing and thawing



Immunohistochemistry analysis of paraffin-embedded Human colon carcinoma tissue using Phospho-CDC25C (Ser198) antibody. High-pressure and temperature Sodium Citrate pH 6.0 was used for antigen retrieval. Sample with blocking peptide on the right.