

## PHOSPHO-CDK1/2 (THR14) RABBIT MAB

**Cat.#:** N263153

**Product Name:** Anti-Phospho-CDK1/2 (Thr14) Rabbit Monoclonal Antibody

**Synonyms:** CDKN2; p33(CDK2)

**UNIPROT ID:** P06493/P24941

**Background:** Cdk2 is a member of the Ser/Thr protein kinase family. It is highly similar to the gene products of *S. cerevisiae* cdc28, and *S. pombe* cdc2. Cdk2 is closely related to cdc2 (cdk1) which has proved useful as a marker of proliferation. Cdk1 and Cdk2 are a catalytic subunits of the highly conserved protein kinase complex known as M-phase promoting factor (MPF), which is essential for G1/S and G2/M phase transitions of eukaryotic cell cycle.

**Immunogen:** A synthetic phosphopeptide corresponding to residues surrounding Thr14 of human Cdk1/2

**Applications:** WB,IHC-P,IP

**Recommended Dilutions:** WB: 1/500-1/1000 IHC: 1/50-1/100 IP: 1/20

**Host Species:** Rabbit

**Clonality:** Rabbit Monoclonal

**Clone ID:** R06-1A5

**MW:** Calculated MW: 34 kDa; Observed MW: 34 kDa

**Isotype:** IgG

**Purification:** Affinity Purified

**Species Reactivity:** Human

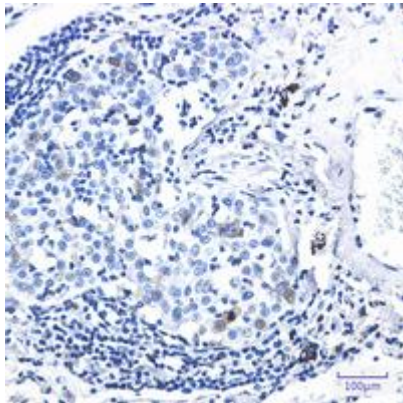
**Conjugation:** Unconjugated

**Modification:** Phosphorylated

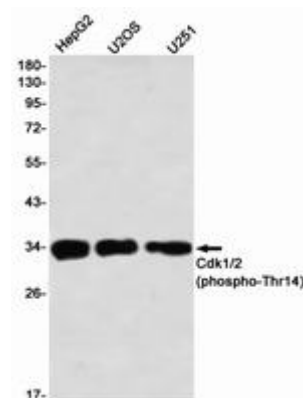
**Constituents:** PBS (without Mg<sup>2+</sup> and Ca<sup>2+</sup>), pH 7.3 containing 50% glycerol, 0.5% BSA and 0.02% sodium azide

**Research Areas:** Cell Biology

**Storage & Shipping:** Store at -20°C. Avoid repeated freezing and thawing



Immunohistochemistry analysis of paraffin-embedded Human lung cancer using Cdk1/2 (Phospho-Thr14) antibody. High-pressure and temperature Sodium Citrate pH 6.0 was used for antigen retrieval.



Western blot analysis of Cdk1/2 (Phospho-Thr14) in HepG2, U2OS, U251 lysates using Phospho-CDK1/2 (Thr14) antibody.