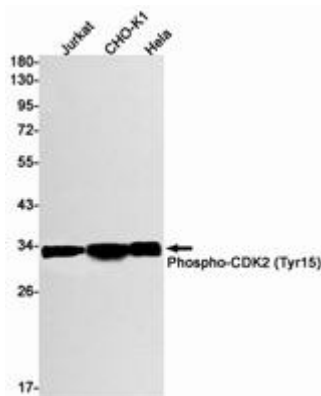
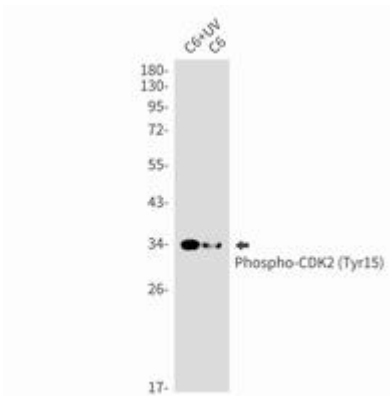


PHOSPHO-CDK2 (TYR15) RABBIT MAB**Cat.#:** N261711**Product Name:** Anti-Phospho-CDK2 (Tyr15) Rabbit Monoclonal Antibody**Synonyms:** CDK2; CDKN2; Cyclin-dependent kinase 2; Cell division protein kinase 2; p33 protein kinase**UNIPROT ID:** P24941**Background:** The protein encoded by this gene is a member of the Ser/Thr protein kinase family. This protein is a catalytic subunit of the highly conserved protein kinase complex known as M-phase promoting factor (MPF), which is essential for G1/S and G2/M phase transitions of eukaryotic cell cycle.**Immunogen:** A synthetic phosphopeptide corresponding to residues surrounding Tyr15 of human Cdk2**Applications:** WB,IP**Recommended Dilutions:** WB: 1/500-1/1000 IP: 1/20**Host Species:** Rabbit**Clonality:** Rabbit Monoclonal**Clone ID:** R05-2C4**MW:** Calculated MW: 34 kDa; Observed MW: 34 kDa**Isotype:** IgG**Purification:** Affinity Purified**Species Reactivity:** Human,Hamster,Rat**Conjugation:** Unconjugated**Modification:** Phosphorylated**Constituents:** PBS (without Mg²⁺ and Ca²⁺), pH 7.3 containing 50% glycerol, 0.5% BSA and 0.02% sodium azide**Research Areas:** Cell Biology**Storage & Shipping:** Store at -20°C. Avoid repeated freezing and thawing



Western blot analysis of Phospho-CDK2 (Tyr15) in Jurkat, CHO-K1, HeLa lysates using Phospho-CDK2 (Tyr15) antibody.



Western blot analysis of Phospho-CDK2 (Tyr15) in C6, C6+UV lysates using Phospho-CDK2 (Tyr15) antibody.