

PHOSPHO-CYCLIN B1 (SER126) RABBIT MAB

Cat.#: N263155

Product Name: Anti-Phospho-Cyclin B1 (Ser126) Rabbit Monoclonal Antibody

Synonyms: CCNB1; CCNB; G2/mitotic-specific cyclin-B1

UNIPROT ID: P14635

Background: Essential for the control of the cell cycle at the G2/M (mitosis) transition. a member of the highly conserved cyclin family, whose members are characterized by a dramatic periodicity in protein abundance through the cell cycle. Cyclins function as regulators of CDK kinases.

Immunogen: A synthetic phosphopeptide corresponding to residues surrounding Ser126 of human Cyclin B1

Applications: WB,IP

Recommended Dilutions: WB: 1/500-1/1000 IP: 1/20

Host Species: Rabbit

Clonality: Rabbit Monoclonal

Clone ID: R05-3B3

MW: Calculated MW: 48 kDa; Observed MW: 55 kDa

Isotype: IgG

Purification: Affinity Purified

Species Reactivity: Human

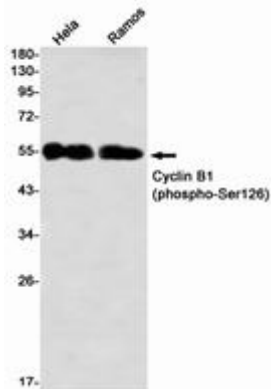
Conjugation: Unconjugated

Modification: Phosphorylated

Constituents: PBS (without Mg²⁺ and Ca²⁺), pH 7.3 containing 50% glycerol, 0.5% BSA and 0.02% sodium azide

Research Areas: Cell Biology

Storage & Shipping: Store at -20°C. Avoid repeated freezing and thawing



Western blot analysis of Cyclin B1 (Phospho-Ser126) in HeLa, Ramos lysates using Phospho-Cyclin B1 (Ser126) antibody.