

PHOSPHO-E CADHERIN (SER838/SER840) RABBIT MAB

Cat.#: N263158

Product Name: Anti-Phospho-E Cadherin (Ser838/Ser840) Rabbit Monoclonal Antibody

Synonyms: CDH1; CDHE; UVO; Cadherin-1; CAM 120/80; Epithelial cadherin; E-cadherin; Uvomorulin; CD antigen CD324

UNIPROT ID: P12830

Background: CDH1 a single-pass type I membrane protein, and calcium dependent cell adhesion proteins. It is a ligand for integrin alpha-E/beta-7, and it colocalizes with DLG7 at sites of cell-cell contact in intestinal epithelial cells.

Immunogen: A synthetic phosphopeptide corresponding to residues surrounding Ser838/Ser840 of human E Cadherin

Applications: WB,IHC-P,IP

Recommended Dilutions: WB: 1/500-1/1000 IHC: 1/50-1/100 IP: 1/20

Host Species: Rabbit

Clonality: Rabbit Monoclonal

Clone ID: R03-3B3

MW: Calculated MW: 97 kDa; Observed MW: 135 kDa

Isotype: IgG

Purification: Affinity Purified

Species Reactivity: Human,Mouse

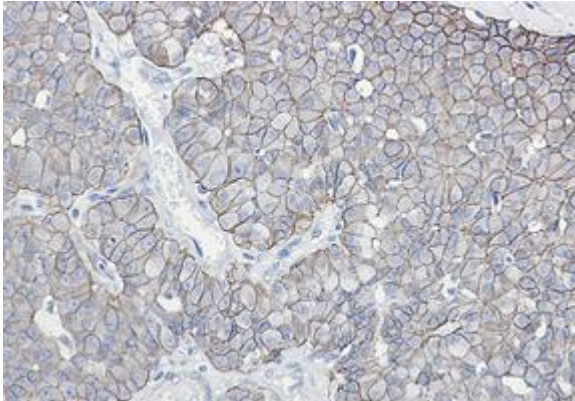
Conjugation: Unconjugated

Modification: Phosphorylated

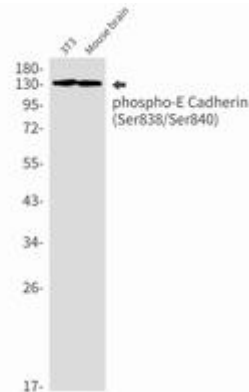
Constituents: PBS (without Mg²⁺ and Ca²⁺), pH 7.3 containing 50% glycerol, 0.5% BSA and 0.02% sodium azide

Research Areas: Signal Transduction

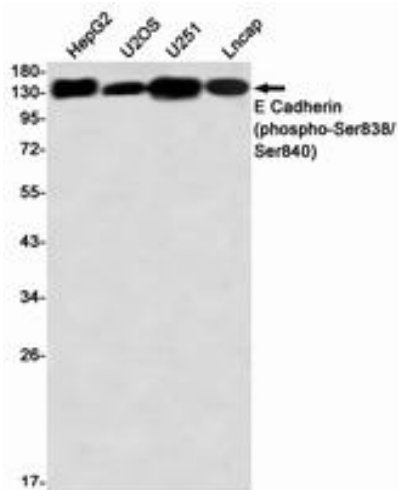
Storage & Shipping: Store at -20°C. Avoid repeated freezing and thawing



Immunohistochemistry analysis of paraffin-embedded Human breast cancer using E Cadherin (Phospho-Ser838/Ser840) antibody. High-pressure and temperature Sodium Citrate pH 6.0 was used for antigen retrieval.



Western blot analysis of Phospho-E Cadherin (Ser838/Ser840) in 3T3, mouse brain lysates using Phospho-E Cadherin (Ser838/Ser840) antibody.



Western blot analysis of E Cadherin (Phospho-Ser838/Ser840) in HepG2, U2OS, U251, Lncap lysates using E Cadherin (Phospho-Ser838/Ser840) antibody.