

## PHOSPHO-EDG1 (THR236) RABBIT PAB

**Cat.#:** N225333

**Product Name:** Anti-Phospho-EDG1 (Thr236) Rabbit pAb

**Synonyms:** SIPR1; CHEDG1; EDG1; Sphingosine 1-phosphate receptor 1; SIP receptor 1; SIP1; Endothelial differentiation G-protein coupled receptor 1; Sphingosine 1-phosphate receptor Edg-1; SIP receptor Edg-1; CD antigen CD363

**UNIPROT ID:** P21453

**Background:** Receptor for the lysosphingolipid sphingosine 1-phosphate (SIP). SIP is a bioactive lysophospholipid that elicits diverse physiological effect on most types of cells and tissues. This inducible epithelial cell G-protein-coupled receptor may be involved in the processes that regulate the differentiation of endothelial cells.

**Immunogen:** Synthetic peptide of human SIPR1

**Applications:** WB, ICC/IF, ELISA

**Recommended Dilutions:** WB: 1/500-1/1000 ICC: 1/100-1/200 ELISA: 1/10000

**Host Species:** Rabbit

**Clonality:** Rabbit Polyclonal

**Clone ID:** -

**MW:** Calculated MW: 43 kDa; Observed MW: 42 kDa

**Isotype:** IgG

**Purification:** Affinity Purified

**Species Reactivity:** Human, Mouse, Rat

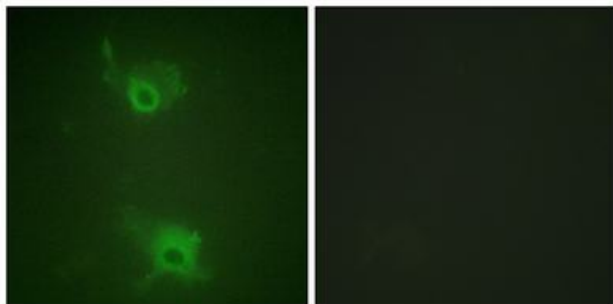
**Conjugation:** Unconjugated

**Modification:** Phosphorylated

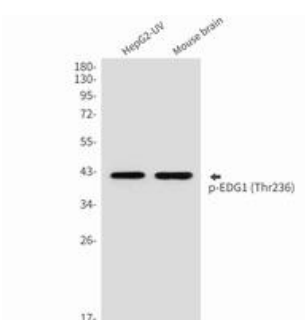
**Constituents:** PBS (without Mg<sup>2+</sup> and Ca<sup>2+</sup>), pH 7.3 containing 50% glycerol, 0.5% BSA and 0.02% sodium azide

**Research Areas:** Cell Biology

**Storage & Shipping:** Store at -20°C. Avoid repeated freezing and thawing



Immunofluorescence analysis of Phospho-EDG1 (Thr236) in COS7 using Phospho-EDG1 (Thr236) antibody. The picture on the right is blocked using the Phospho-peptide.



Western blot analysis of Phospho-EDG1 (Thr236) in HepG2, mouse brain lysates using Phospho-EDG1 (Thr236) antibody.