

## PHOSPHO-ELONGATION FACTOR 2 (THR56/THR58) RABBIT MAB

**Cat.#:** N263159

**Product Name:** Anti-Phospho-Elongation Factor 2 (Thr56/Thr58) Rabbit Monoclonal Antibody

**Synonyms:** EEF2; EF2; Elongation factor 2; EF-2

**UNIPROT ID:** P13639

**Background:** Catalyzes the GTP-dependent ribosomal translocation step during translation elongation. During this step, the ribosome changes from the pre-translocational (PRE) to the post-translocational (POST) state as the newly formed A-site-bound peptidyl-tRNA and P-site-bound deacylated tRNA move to the P and E sites, respectively.

**Immunogen:** A synthetic phosphopeptide corresponding to residues surrounding Thr56/Thr58 of human EEF2/Elongation factor 2

**Applications:** WB

**Recommended Dilutions:** WB: 1/500-1/1000

**Host Species:** Rabbit

**Clonality:** Rabbit Monoclonal

**Clone ID:** R02-5B5

**MW:** Calculated MW: 95 kDa; Observed MW: 95 kDa

**Isotype:** IgG

**Purification:** Affinity Purified

**Species Reactivity:** Human

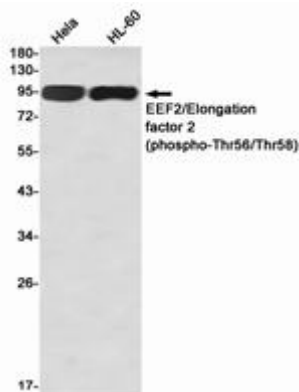
**Conjugation:** Unconjugated

**Modification:** Phosphorylated

**Constituents:** PBS (without Mg<sup>2+</sup> and Ca<sup>2+</sup>), pH 7.3 containing 50% glycerol, 0.5% BSA and 0.02% sodium azide

**Research Areas:** Epigenetics and Nuclear Signaling

**Storage & Shipping:** Store at -20°C. Avoid repeated freezing and thawing



Western blot analysis of EEF2/Elongation factor 2 (Phospho-Thr56/Thr58) in HeLa, HL-60 lysates using Phospho-Elongation Factor 2 (Thr56/Thr58) antibody.