

PHOSPHO-ERBB 4 (TYR1162) RABBIT MAB

Cat.#: N263162

Product Name: Anti-Phospho-ErbB 4 (Tyr1162) Rabbit Monoclonal Antibody

Synonyms: ERBB4; HER4; Receptor tyrosine-protein kinase erbB-4; Proto-oncogene-like protein c-ErbB-4; Tyrosine kinase-type cell surface receptor HER4; p180erbB4

UNIPROT ID: Q15303

Background: The HER4/ERBB4 gene is a member of the type I receptor tyrosine kinase subfamily that includes EGFR (MIM 131550), ERBB2 (MIM 164870), and ERBB3 (MIM 190151). It encodes a receptor for NDF/hereregulin (MIM 142445).

Immunogen: A synthetic phosphopeptide corresponding to residues surrounding Tyr1162 of human ErbB 4

Applications: WB,IHC-P,IP

Recommended Dilutions: WB: 1/500-1/1000 IHC: 1/50-1/100 IP: 1/20

Host Species: Rabbit

Clonality: Rabbit Monoclonal

Clone ID: R07-4C0

MW: Calculated MW: 147 kDa; Observed MW: 180 kDa

Isotype: IgG

Purification: Affinity Purified

Species Reactivity: Human

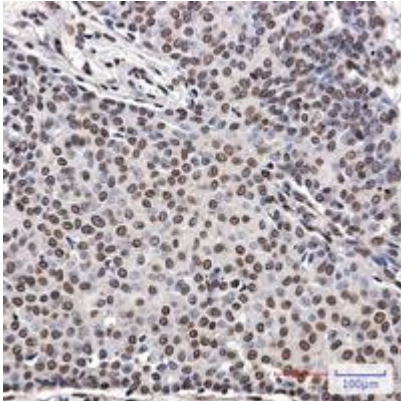
Conjugation: Unconjugated

Modification: Phosphorylated

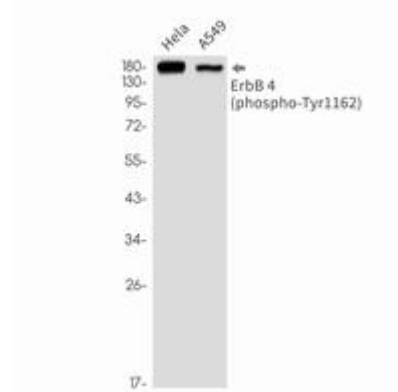
Constituents: PBS (without Mg²⁺ and Ca²⁺), pH 7.3 containing 50% glycerol, 0.5% BSA and 0.02% sodium azide

Research Areas: Cancer

Storage & Shipping: Store at -20°C. Avoid repeated freezing and thawing



Immunohistochemistry analysis of paraffin-embedded Human breast cancer using ErbB 4 (Phospho-Tyr1162) antibody. High-pressure and temperature Sodium Citrate pH 6.0 was used for antigen retrieval.



Western blot analysis of Phospho-ErbB 4 (Tyr1162) in HeLa, A549 lysates using Phospho-ErbB 4 (Tyr1162) antibody.