

PHOSPHO-FILAMIN A/B (SER2152/SER2107) RABBIT MAB

Cat.#: N263165

Product Name: Anti-Phospho-Filamin A/B (Ser2152/Ser2107) Rabbit Monoclonal Antibody

Synonyms: FLN; FMD; MNS; OPD; ABPX; CSBS; CVD1; FGS2; FLN1; NHBP; OPD1; OPD2; XLVD; XMVD; FLN-A; ABP-280

UNIPROT ID: O75369

Background: Connects cell membrane constituents to the actin cytoskeleton.

Immunogen: A synthetic phosphopeptide corresponding to residues surrounding Ser2152 of human Filamin A

Applications: WB,IHC-F,IHC-P,ICC/IF

Recommended Dilutions: WB: 1/500-1/1000 IHC: 1/50-1/100 IF: 1/50-1/200

Host Species: Rabbit

Clonality: Rabbit Monoclonal

Clone ID: R02-7C0

MW: Calculated MW: 278 kDa; Observed MW: 281 kDa

Isotype: IgG

Purification: Affinity Purified

Species Reactivity: Human,Rat

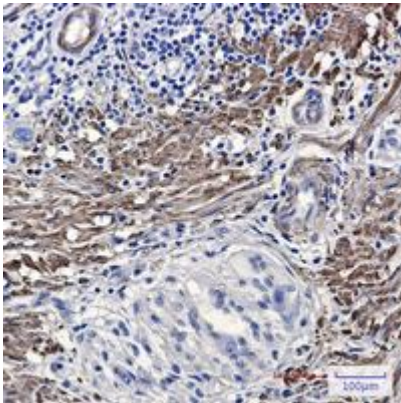
Conjugation: Unconjugated

Modification: Phosphorylated

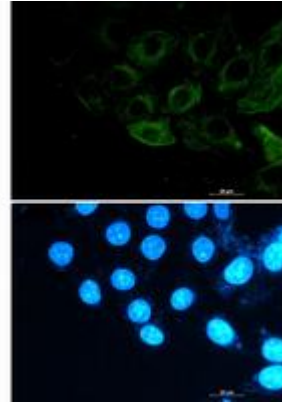
Constituents: PBS (without Mg²⁺ and Ca²⁺), pH 7.3 containing 50% glycerol, 0.5% BSA and 0.02% sodium azide

Research Areas: -

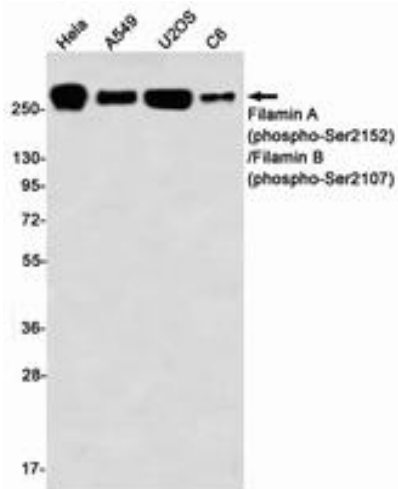
Storage & Shipping: Store at -20°C. Avoid repeated freezing and thawing



Immunohistochemistry analysis of paraffin-embedded Human Cholangiocarcinoma using Filamin A (Phospho-Ser2152)/Filamin B (Phospho-Ser2107) antibody. High-pressure and temperature Sodium Citrate pH 6.0 was used for antigen retrieval.



Immunocytochemistry analysis of Phospho-Filamin A/B (Ser2152/Ser2107) (green) in A549 using Phospho-Filamin A/B (Ser2152/Ser2107) antibody, and DAPI (blue).



Western blot analysis of Filamin A (Phospho-Ser2152)/Filamin B (Phospho-Ser2107) in HeLa, A549, U2OS, C6 lysates using Filamin A (Phospho-Ser2152)/Filamin B (Phospho-Ser2107) antibody.