

## PHOSPHO-FOXO1/3 (SER322/S325) RABBIT PAB

**Cat.#:** N225149

**Product Name:** Anti-Phospho-FOXO1/3 (Ser322/S325) Rabbit pAb

**Synonyms:** FOXO1; FKHR; FOXO1A; Forkhead box protein O1; Forkhead box protein O1A; Forkhead in rhabdomyosarcoma; FOXO3; FKHRL1; FOXO3A; Forkhead box protein O3; AF6q21 protein; Forkhead in rhabdomyosarcoma-like 1

**UNIPROT ID:** Q12778/O43524

**Background:** Transcription factor which acts as a regulator of cell responses to oxidative stress. In the presence of KRT11, mediates down-regulation of cyclin D1 and up-regulation of CDKN1B levels which are required for cell transition from proliferative growth to quiescence.

**Immunogen:** The antiserum was produced against synthesized peptide derived from human FOXO1A/3A around the phosphorylation site of Ser322 and Ser325. AA range:291-340

**Applications:** WB,IHC-P,ELISA

**Recommended Dilutions:** WB: 1/500-1/1000 IHC: 1/50-1/100 ELISA: 1/10000

**Host Species:** Rabbit

**Clonality:** Rabbit Polyclonal

**Clone ID:** -

**MW:** Calculated MW: 70 kDa; Observed MW: 97 kDa

**Isotype:** IgG

**Purification:** Affinity Purified

**Species Reactivity:** Human,Mouse,Rat

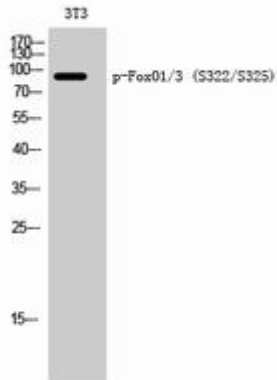
**Conjugation:** Unconjugated

**Modification:** Phosphorylated

**Constituents:** PBS (without Mg<sup>2+</sup> and Ca<sup>2+</sup>), pH 7.3 containing 50% glycerol, 0.5% BSA and 0.02% sodium azide

**Research Areas:** Epigenetics and Nuclear Signaling

**Storage & Shipping:** Store at -20°C. Avoid repeated freezing and thawing



Western blot analysis of Phospho-FOXO1/3 (Ser322/S325) in 3T3 lysates using Phospho-FOXO1/3 (Ser322/S325) antibody.