

## PHOSPHO-GLUCOCORTICOID RECEPTOR (SER226) RABBIT MAB

**Cat.#:** N263167

**Product Name:** Anti-Phospho-Glucocorticoid Receptor (Ser226) Rabbit Monoclonal Antibody

**Synonyms:** NR3C1; GRL; Glucocorticoid receptor; GR; Nuclear receptor subfamily 3 group C member 1

**UNIPROT ID:** P04150

**Background:** The protein encoded by this gene is a receptor for glucocorticoids and can act as both a transcription factor and a regulator of other transcription factors. The encoded protein can bind DNA as a homodimer or as a heterodimer with another protein such as the retinoid X receptor. This protein can also be found in heteromeric cytoplasmic complexes along with heat shock factors and immunophilins.

**Immunogen:** A synthetic phosphopeptide corresponding to residues surrounding Ser226 of human Glucocorticoid Receptor

**Applications:** WB,IHC-P

**Recommended Dilutions:** WB: 1/500-1/1000 IHC: 1/50-1/100

**Host Species:** Rabbit

**Clonality:** Rabbit Monoclonal

**Clone ID:** R02-1H0

**MW:** Calculated MW: 86 kDa; Observed MW: 94 kDa

**Isotype:** IgG

**Purification:** Affinity Purified

**Species Reactivity:** Human,Rat

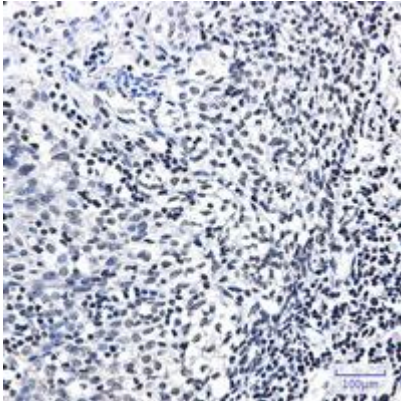
**Conjugation:** Unconjugated

**Modification:** Phosphorylated

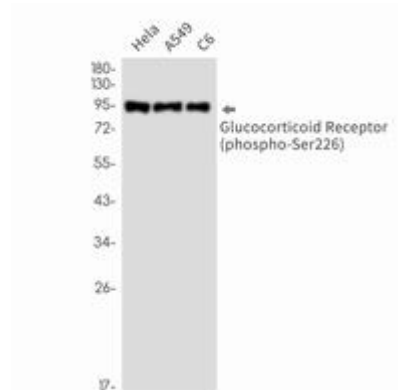
**Constituents:** PBS (without Mg<sup>2+</sup> and Ca<sup>2+</sup>), pH 7.3 containing 50% glycerol, 0.5% BSA and 0.02% sodium azide

**Research Areas:** Signal Transduction

**Storage & Shipping:** Store at -20°C. Avoid repeated freezing and thawing



Immunohistochemistry analysis of paraffin-embedded Human tonsil using Glucocorticoid Receptor (Phospho-Ser226) antibody. High-pressure and temperature Sodium Citrate pH 6.0 was used for antigen retrieval.



Western blot analysis of Phospho-Glucocorticoid Receptor (Ser226) in HeLa, A549, C6 lysates using Phospho-Glucocorticoid Receptor (Ser226) antibody.