

PHOSPHO-GLYCOGEN SYNTHASE (SER641) RABBIT PAB

Cat.#: N225618

Product Name: Anti-Phospho-Glycogen Synthase (Ser641) Rabbit pAb

Synonyms: GYS1; GYS; Glycogen [starch] synthase; muscle

UNIPROT ID: P13807

Background: Transfers the glycosyl residue from UDP-Glc to the non-reducing end of alpha-1,4-glucan. Allosteric activation by glucose-6-phosphate. Phosphorylation reduces the activity towards UDP-glucose. When in the non-phosphorylated state, glycogen synthase does not require glucose-6-phosphate as an allosteric activator; when phosphorylated it does.

Immunogen: A synthesized peptide derived from human Phospho-Glycogen synthase 1 (S641)

Applications: WB,IHC-P,ICC/IF,IP

Recommended Dilutions: WB: 1/500-1/1000 IHC: 1/50-1/100 IF: 1/50-1/200 IP: 1/20

Host Species: Rabbit

Clonality: Rabbit Polyclonal

Clone ID: -

MW: Calculated MW: 84 kDa; Observed MW: 84 kDa

Isotype: IgG

Purification: Affinity Chromatography

Species Reactivity: Human,Mouse

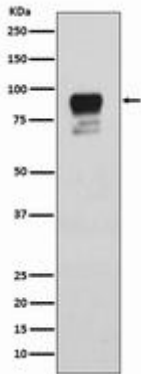
Conjugation: Unconjugated

Modification: Phosphorylated

Constituents: PBS (without Mg²⁺ and Ca²⁺), pH 7.3 containing 50% glycerol, 0.5% BSA and 0.02% sodium azide

Research Areas: Signal Transduction

Storage & Shipping: Store at -20°C. Avoid repeated freezing and thawing



Western blot analysis of Phospho-Glycogen synthase 1 (S641) in HeLa lysates using Phospho-Glycogen Synthase (Ser641) antibody.