

## PHOSPHO-GRLF1 (TYR1087) RABBIT PAB

**Cat.#:** N225148

**Product Name:** Anti-Phospho-GRLF1 (Tyr1087) Rabbit pAb

**Synonyms:** ARHGAP35; GRF1; GRLF1; KIAA1722; Rho GTPase-activating protein 35; Glucocorticoid receptor DNA-binding factor 1; Glucocorticoid receptor repression factor 1; GRF-1; Rho GAP p190A; p190-A

**UNIPROT ID:** Q9NRY4

**Background:** Rho GTPase-activating protein (GAP).

**Immunogen:** Synthesized phospho-peptide around the phosphorylation site of human GRF-1 (phospho Tyr1087)

**Applications:** WB,ELISA

**Recommended Dilutions:** WB: 1/500-1/1000 ELISA: 1/10000

**Host Species:** Rabbit

**Clonality:** Rabbit Polyclonal

**Clone ID:** -

**MW:** Calculated MW: 171 kDa; Observed MW: 190 kDa

**Isotype:** IgG

**Purification:** Affinity Purified

**Species Reactivity:** Human,Mouse,Rat

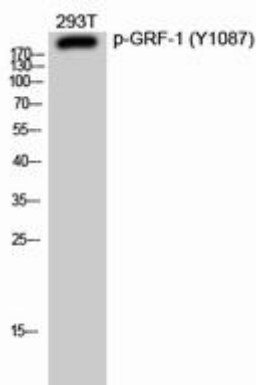
**Conjugation:** Unconjugated

**Modification:** Phosphorylated

**Constituents:** PBS (without Mg<sup>2+</sup> and Ca<sup>2+</sup>), pH 7.3 containing 50% glycerol, 0.5% BSA and 0.02% sodium azide

**Research Areas:** Signal Transduction

**Storage & Shipping:** Store at -20°C. Avoid repeated freezing and thawing



Western blot analysis of Phospho-GRLF1 (Tyr1087) in 293T lysates using Phospho-GRLF1 (Tyr1087) antibody.



# Product Description

Pioneering GTPase and Oncogene Product Development since 2010

---