

## PHOSPHO-HISTONE H3 (SER10/THR11) RABBIT MAB

**Cat.#:** N263168

**Product Name:** Anti-Phospho-Histone H3 (Ser10/Thr11) Rabbit Monoclonal Antibody

**Synonyms:** H3 histone; family 3A; H3 histone; family 3B (H3.3B); H3.3A; H3.3B; H33; H3F3; H3F3A; H3F3B; Histone H3.3

**UNIPROT ID:** P68431

**Background:** H3 Core component of nucleosome. Nucleosomes wrap and compact DNA into chromatin, limiting DNA accessibility to the cellular machineries which require DNA as a template. Histones thereby play a central role in transcription regulation, DNA repair, DNA replication and chromosomal stability.

**Immunogen:** A synthetic phosphopeptide corresponding to residues surrounding Ser10/Thr11 of human Histone H3

**Applications:** WB,IHC-F,IHC-P,ICC/IF,IP

**Recommended Dilutions:** WB: 1/500-1/1000 IHC: 1/50-1/100 IF: 1/50-1/200 IP: 1/20

**Host Species:** Rabbit

**Clonality:** Rabbit Monoclonal

**Clone ID:** R08-6C4

**MW:** Calculated MW: 15 kDa; Observed MW: 15 kDa

**Isotype:** IgG

**Purification:** Affinity Purified

**Species Reactivity:** Human,Mouse,Rat

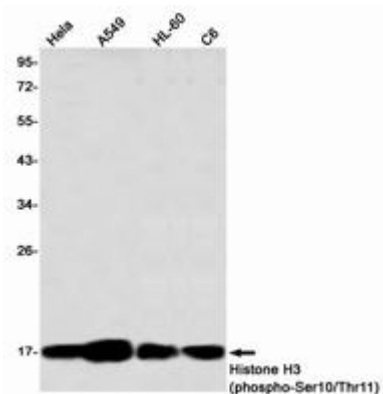
**Conjugation:** Unconjugated

**Modification:** Phosphorylated

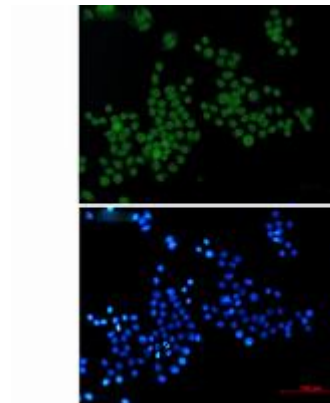
**Constituents:** PBS (without Mg<sup>2+</sup> and Ca<sup>2+</sup>), pH 7.3 containing 50% glycerol, 0.5% BSA and 0.02% sodium azide

**Research Areas:** EpigeneticsyyyHistone phosphorylation

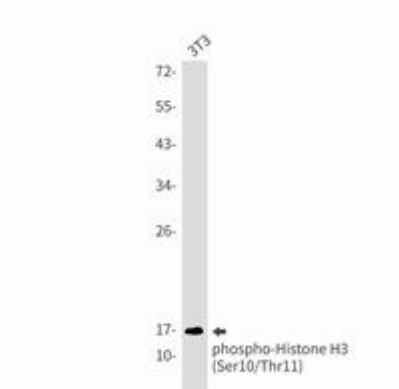
**Storage & Shipping:** Store at -20°C. Avoid repeated freezing and thawing



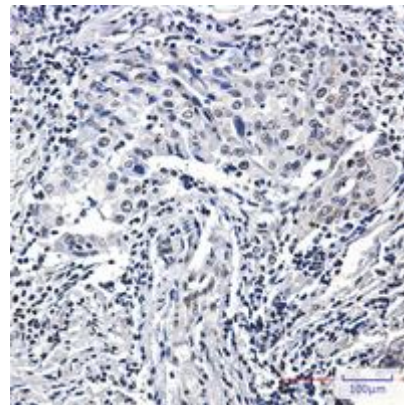
Western blot analysis of Histone H3 (Phospho-Ser10/Thr11) in HeLa, A549, HL-60, C6 lysates using Histone H3 (Phospho-Ser10/Thr11) antibody



Immunocytochemistry analysis of Phospho-Histone H3 (Ser10/Thr11) (green) in HeLa using Phospho-Histone H3 (Ser10/Thr11) antibody, and DAPI (blue).



Western blot analysis of Phospho-Histone H3 (Ser10/Thr11) in 3T3 lysates using Phospho-Histone H3 (Ser10/Thr11) antibody.



Immunohistochemistry analysis of paraffin-embedded Human lung cancer using Histone H3 (Phospho-Ser10/Thr11) antibody. High-pressure and temperature Sodium Citrate pH 6.0 was used for antigen retrieval.