

PHOSPHO-HSF1 (SER303/SER307) RABBIT MAB

Cat.#: N263171

Product Name: Anti-Phospho-HSF1 (Ser303/Ser307) Rabbit Monoclonal Antibody

Synonyms: HSF1; HSTF1; Heat shock factor protein 1; HSF 1; Heat shock transcription factor 1; HSTF 1

UNIPROT ID: Q00613

Background: DNA-binding protein that specifically binds heat shock promoter elements (HSE) and activates transcription. In higher eukaryotes, HSF is unable to bind to the HSE unless the cells are heat shocked.

Immunogen: A synthetic phosphopeptide corresponding to residues surrounding Ser303/Ser307 of human HSF1

Applications: WB,IHC-P

Recommended Dilutions: WB: 1/500-1/1000 IHC: 1/50-1/100

Host Species: Rabbit

Clonality: Rabbit Monoclonal

Clone ID: R01-7G4

MW: Calculated MW: 57 kDa; Observed MW: 82 kDa

Isotype: IgG

Purification: Affinity Purified

Species Reactivity: Human

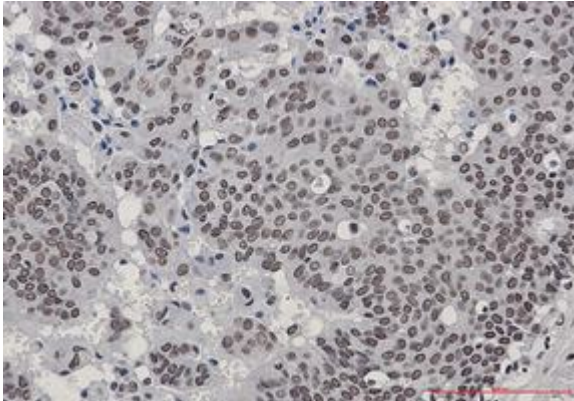
Conjugation: Unconjugated

Modification: Phosphorylated

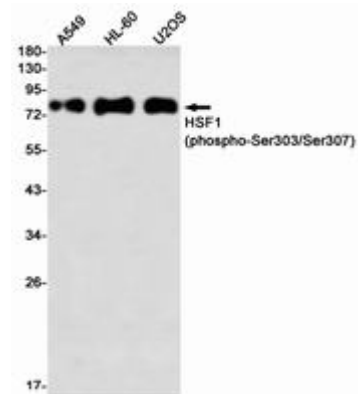
Constituents: PBS (without Mg²⁺ and Ca²⁺), pH 7.3 containing 50% glycerol, 0.5% BSA and 0.02% sodium azide

Research Areas: Tags & Cell Markers

Storage & Shipping: Store at -20°C. Avoid repeated freezing and thawing



Immunohistochemistry analysis of paraffin-embedded Human breast cancer using HSF1 (Phospho-Ser303/Ser307) antibody. High-pressure and temperature Sodium Citrate pH 6.0 was used for antigen retrieval.



Western blot analysis of HSF1 (Phospho-Ser303/Ser307) in A549, HL-60, U2OS lysates using Phospho-HSF1 (Ser303/Ser307) antibody.