

## PHOSPHO-HSF1 (SER326) RABBIT MAB

**Cat.#:** N262365

**Product Name:** Anti-Phospho-HSF1 (Ser326) Rabbit Monoclonal Antibody

**Synonyms:** HSF1; HSTF1; Heat shock factor protein 1; HSF 1; Heat shock transcription factor 1; HSTF 1

**UNIPROT ID:** Q00613

**Background:** DNA-binding protein that specifically binds heat shock promoter elements (HSE) and activates transcription. In higher eukaryotes, HSF is unable to bind to the HSE unless the cells are heat shocked.

**Immunogen:** A synthetic phosphopeptide corresponding to residues surrounding Ser326 of human HSF1

**Applications:** WB,IHC-F,IHC-P,ICC/IF,IP

**Recommended Dilutions:** WB: 1/500-1/1000 IHC: 1/50-1/100 IF: 1/50-1/200 IP: 1/20

**Host Species:** Rabbit

**Clonality:** Rabbit Monoclonal

**Clone ID:** R08-411

**MW:** Calculated MW: 57 kDa; Observed MW: 82 kDa

**Isotype:** IgG

**Purification:** Affinity Purified

**Species Reactivity:** Human

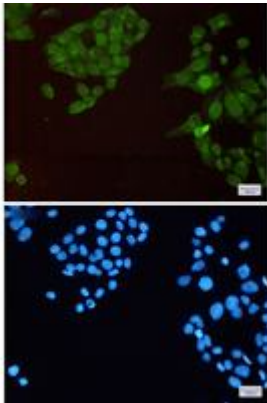
**Conjugation:** Unconjugated

**Modification:** Phosphorylated

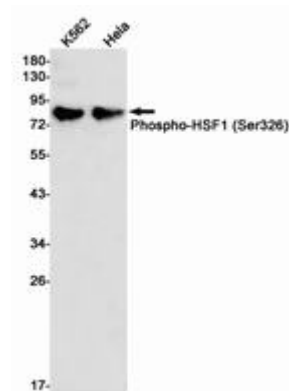
**Constituents:** PBS (without Mg<sup>2+</sup> and Ca<sup>2+</sup>), pH 7.3 containing 50% glycerol, 0.5% BSA and 0.02% sodium azide

**Research Areas:** Tags & Cell Markers

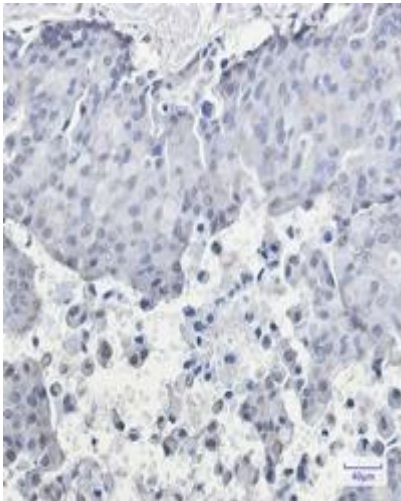
**Storage & Shipping:** Store at -20°C. Avoid repeated freezing and thawing



Immunocytochemistry analysis of HSF1 (Phospho-Ser326) (green) in HeLa using HSF1 (Phospho-Ser326) antibody, and DAPI (blue)



Western blot analysis of Phospho-HSF1 (Ser326) in K562, HeLa lysates using Phospho-HSF1 (Ser326) antibody.



Immunohistochemistry analysis of paraffin-embedded Human breast cancer using HSF1 (Phospho-Ser326) antibody. High-pressure and temperature Sodium Citrate pH 6.0 was used for antigen retrieval.