

PHOSPHO-IGF1 RECEPTOR (TYR1165/TYR1166) RABBIT PAB

Cat.#: N225089

Product Name: Anti-Phospho-IGF1 Receptor (Tyr1165/Tyr1166) Rabbit pAb

Synonyms: IGF1R; Insulin-like growth factor 1 receptor; Insulin-like growth factor I receptor; IGF-I receptor; CD antigen CD221

UNIPROT ID: P08069

Background: This receptor binds insulin-like growth factor with a high affinity. It has tyrosine kinase activity. The insulin-like growth factor I receptor plays a critical role in transformation events. Cleavage of the precursor generates alpha and beta subunits. It is highly overexpressed in most malignant tissues where it functions as an anti-apoptotic agent by enhancing cell survival. Alternatively spliced transcript variants encoding distinct isoforms have been found for this gene. [provided by RefSeq, May 2014]

Immunogen: The antiserum was produced against synthesized peptide derived from human IGF1R around the phosphorylation site of Tyr1165/Tyr1166. AA range:1131-1180

Applications: WB,ELISA

Recommended Dilutions: WB: 1/500-1/1000 ELISA: 1/10000

Host Species: Rabbit

Clonality: Rabbit Polyclonal

Clone ID: -

MW: Calculated MW: 155 kDa; Observed MW: 155 kDa

Isotype: IgG

Purification: Affinity Purified

Species Reactivity: Human,Mouse,Rat,Monkey

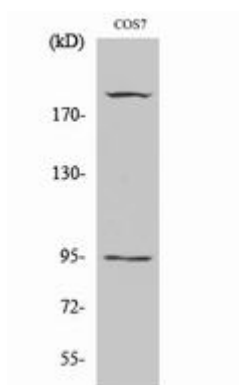
Conjugation: Unconjugated

Modification: Phosphorylated

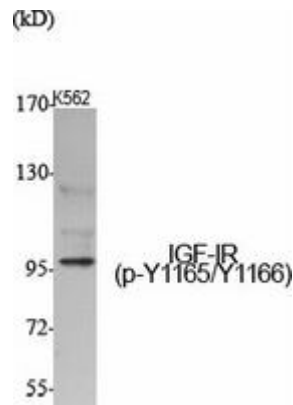
Constituents: PBS (without Mg²⁺ and Ca²⁺), pH 7.3 containing 50% glycerol, 0.5% BSA and 0.02% sodium azide

Research Areas: Signal Transduction

Storage & Shipping: Store at -20°C. Avoid repeated freezing and thawing



Western blot analysis of Phospho-IGF1 Receptor (Tyr1165/Tyr1166) in COS7 lysates using Phospho-IGF1 Receptor (Y1165/Y1166) antibody.



Western blot analysis of Phospho-IGF1 Receptor (Tyr1165/Tyr1166) in various lysates using Phospho-IGF1 Receptor (Y1165/Tyr1166) antibody.