

PHOSPHO-IGF1 RECEPTOR (TYR1166) RABBIT MAB

Cat.#: N262412

Product Name: Anti-Phospho-IGF1 Receptor (Tyr1166) Rabbit Monoclonal Antibody

Synonyms: IGF1R; Insulin-like growth factor 1 receptor; Insulin-like growth factor I receptor; IGF-I receptor; CD antigen CD221

UNIPROT ID: P08069

Background: This receptor binds insulin-like growth factor with a high affinity. It has tyrosine kinase activity. The insulin-like growth factor I receptor plays a critical role in transformation events. Cleavage of the precursor generates alpha and beta subunits. It is highly overexpressed in most malignant tissues where it functions as an anti-apoptotic agent by enhancing cell survival. Alternatively spliced transcript variants encoding distinct isoforms have been found for this gene. [provided by RefSeq, May 2014]

Immunogen: A synthetic phosphopeptide corresponding to residues surrounding Tyr1166 of human INSR/IGF-1R

Applications: WB,IP

Recommended Dilutions: WB: 1/500-1/1000 IP: 1/20

Host Species: Rabbit

Clonality: Rabbit Monoclonal

Clone ID: R06-6B1

MW: Calculated MW: 155 kDa; Observed MW: 95 kDa

Isotype: IgG

Purification: Affinity Purified

Species Reactivity: Human,Mouse,Rat

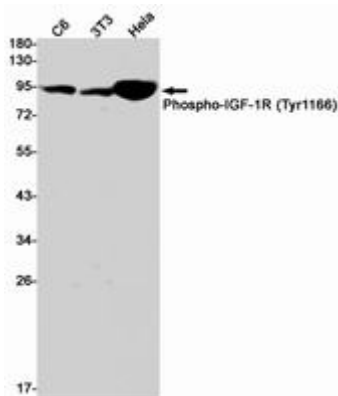
Conjugation: Unconjugated

Modification: Phosphorylated

Constituents: PBS (without Mg²⁺ and Ca²⁺), pH 7.3 containing 50% glycerol, 0.5% BSA and 0.02% sodium azide

Research Areas: Signal Transduction

Storage & Shipping: Store at -20°C. Avoid repeated freezing and thawing



Western blot analysis of Phospho-IGF1R (Tyr1166) in C6, 3T3, HeLa lysates using Phospho-IGF1 Receptor (Tyr1166) antibody.