

## PHOSPHO-JAK1 (TYR1022) RABBIT PAB

**Cat.#:** N225383

**Product Name:** Anti-Phospho-JAK1 (Tyr1022) Rabbit pAb

**Synonyms:** JAK1; JAK1A; JAK1B; Tyrosine-protein kinase JAK1; Janus kinase 1; JAK-1

**UNIPROT ID:** P23458

**Background:** Tyrosine kinase of the non-receptor type, involved in the IFN-alpha/beta/gamma signal pathway. Kinase partner for the interleukin (IL)-2 receptor.

**Immunogen:** The antiserum was produced against synthesized peptide derived from human JAK1 around the phosphorylation site of Tyr1022. AA range:988-1037

**Applications:** ICC/IF,WB,IHC-F,IHC-P,ELISA

**Recommended Dilutions:** WB: 1/500-1/1000 IHC: 1/50-1/100 IF: 1/50-1/200  
ELISA: 1/10000

**Host Species:** Rabbit

**Clonality:** Rabbit Polyclonal

**Clone ID:** -

**MW:** Calculated MW: 133 kDa; Observed MW: 133 kDa

**Isotype:** IgG

**Purification:** Affinity Purified

**Species Reactivity:** Human,Mouse,Rat

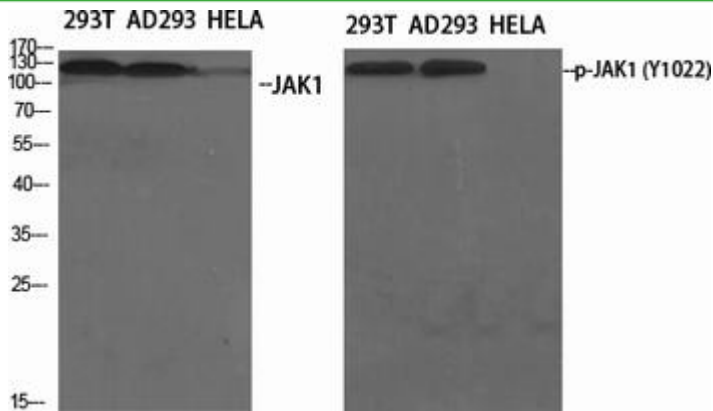
**Conjugation:** Unconjugated

**Modification:** Phosphorylated

**Constituents:** PBS (without Mg<sup>2+</sup> and Ca<sup>2+</sup>), pH 7.3 containing 50% glycerol, 0.5% BSA and 0.02% sodium azide

**Research Areas:** Cell Biology

**Storage & Shipping:** Store at -20°C. Avoid repeated freezing and thawing



Western blot analysis of Phospho-JAK1 (Tyr1022) in various lysates using Phospho-JAK1 (Tyr1022) antibody.