

PHOSPHO-LEPTIN RECEPTOR (TYR1141) RABBIT PAB

Cat.#: N225334

Product Name: Anti-Phospho-Leptin Receptor (Tyr1141) Rabbit pAb

Synonyms: Leptin receptor; LEP-R; HuB219 OB receptor; OB-R; CD295; LEPR; DB; OBR

UNIPROT ID: P48357

Background: On ligand binding, mediates LEP central and peripheral effects through the activation of different signaling pathways such as JAK2/STAT3 and MAPK cascade/FOS. In the hypothalamus, LEP acts as an appetite-regulating factor that induces a decrease in food intake and an increase in energy consumption by inducing anorexigenic factors and suppressing orexigenic neuropeptides, also regulates bone mass and secretion of hypothalamo-pituitary-adrenal hormones (By similarity).

Immunogen: Synthetic peptide of human LEPR

Applications: WB,ELISA

Recommended Dilutions: WB: 1/500-1/1000 ELISA: 1/10000

Host Species: Rabbit

Clonality: Rabbit Polyclonal

Clone ID: -

MW: Calculated MW: 132 kDa; Observed MW: 132 kDa

Isotype: IgG

Purification: Affinity Purified

Species Reactivity: Human,Mouse

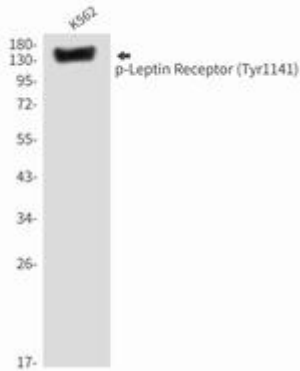
Conjugation: Unconjugated

Modification: Phosphorylated

Constituents: PBS (without Mg²⁺ and Ca²⁺), pH 7.3 containing 50% glycerol, 0.5% BSA and 0.02% sodium azide

Research Areas: Signal Transduction

Storage & Shipping: Store at -20°C. Avoid repeated freezing and thawing



Western blot analysis of Phospho-Leptin Receptor (Tyr1141) in K562 lysates using Phospho-Leptin Receptor (Tyr1141) antibody.