

PHOSPHO-LIM KINASE 1 (THR508) RABBIT PAB

Cat.#: N225295

Product Name: Anti-Phospho-LIM Kinase 1 (Thr508) Rabbit pAb

Synonyms: LIMK1; LIMK; LIM domain kinase 1; LIMK-1

UNIPROT ID: P53667

Background: Protein kinase which regulates actin filament dynamics. Phosphorylates and inactivates the actin binding/depolymerizing factor cofilin, thereby stabilizing the actin cytoskeleton. Stimulates axonal outgrowth and may be involved in brain development. Isoform 3 has a dominant negative effect on actin cytoskeletal changes.

Immunogen: Synthetic peptide of human LIMK1

Applications: WB,IHC-P,ICC/IF

Recommended Dilutions: WB: 1/500-1/1000 IHC: 1/50-1/100 ICC: 1/100-1/200

Host Species: Rabbit

Clonality: Rabbit Polyclonal

Clone ID: -

MW: Calculated MW: 73 kDa; Observed MW: 73 kDa

Isotype: IgG

Purification: Affinity Purified

Species Reactivity: Human,Mouse,Rat

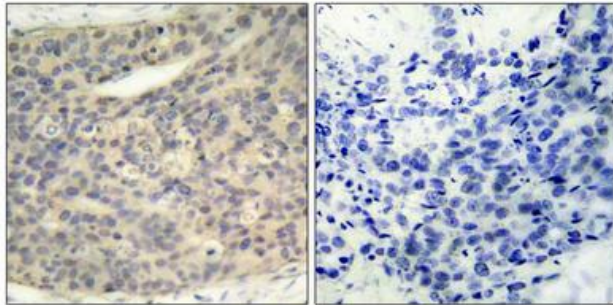
Conjugation: Unconjugated

Modification: Phosphorylated

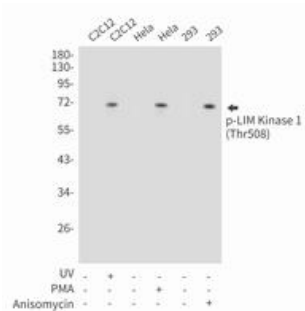
Constituents: PBS (without Mg²⁺ and Ca²⁺), pH 7.3 containing 50% glycerol, 0.5% BSA and 0.02% sodium azide

Research Areas: Neuroscience

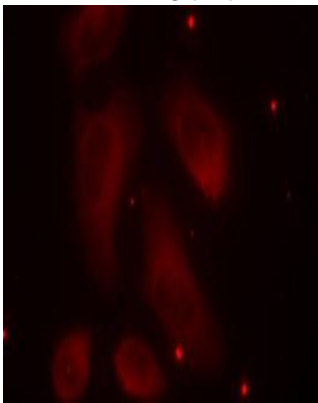
Storage & Shipping: Store at -20°C. Avoid repeated freezing and thawing



Immunohistochemistry analysis of paraffin-embedded Human breast carcinoma tissue using LIMK1(Phospho-Thr508) antibody. High-pressure and temperature Sodium Citrate pH 6.0 was used for antigen retrieval. Sample with blocking peptide on the right.



Western blot analysis of Phospho-LIM Kinase 1 (Thr508) in C2C12, HeLa, 293 lysates using Phospho-LIM Kinase 1 (Thr508) antibody.



Immunofluorescence analysis of Phospho-LIM Kinase 1 (Thr508) in HeLa cells using LIMK1(Phospho-Thr508) antibody (red).