

## PHOSPHO-MDM2 (SER166) RABBIT MAB

**Cat.#:** N261731

**Product Name:** Anti-Phospho-MDM2 (Ser166) Rabbit Monoclonal Antibody

**Synonyms:** Double minute 2 protein; Hdm2; Oncoprotein Mdm2

**UNIPROT ID:** Q00987

**Background:** E3 ubiquitin-protein ligase that mediates ubiquitination of p53/TP53, leading to its degradation by the proteasome.

**Immunogen:** A synthetic phosphopeptide corresponding to residues surrounding Ser166 of human MDM2

**Applications:** WB,IHC-P

**Recommended Dilutions:** WB: 1/500-1/1000 IHC: 1/50-1/100

**Host Species:** Rabbit

**Clonality:** Rabbit Monoclonal

**Clone ID:** R08-8C7

**MW:** Calculated MW: 55 kDa; Observed MW: 90 kDa

**Isotype:** IgG

**Purification:** Affinity Purified

**Species Reactivity:** Human,Rat

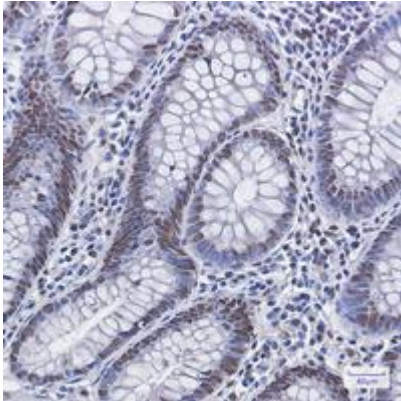
**Conjugation:** Unconjugated

**Modification:** Phosphorylated

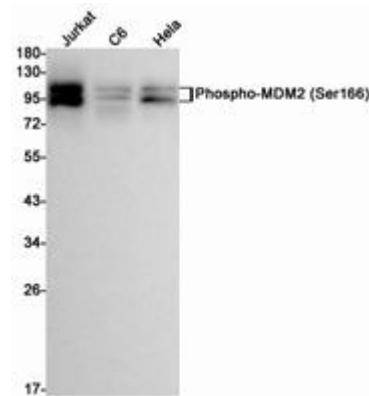
**Constituents:** PBS (without Mg<sup>2+</sup> and Ca<sup>2+</sup>), pH 7.3 containing 50% glycerol, 0.5% BSA and 0.02% sodium azide

**Research Areas:** Neuroscience

**Storage & Shipping:** Store at -20°C. Avoid repeated freezing and thawing



Immunohistochemistry analysis of paraffin-embedded Human colon cancer using Phospho-MDM2 (Ser166) antibody. High-pressure and temperature Sodium Citrate pH 6.0 was used for antigen retrieval.



Western blot analysis of Phospho-MDM2 (Ser166) in Jurkat, C6, HeLa lysates using Phospho-MDM2 (Ser166) antibody.