

## PHOSPHO-MSK1 (SER360) RABBIT MAB

**Cat.#:** N261706

**Product Name:** Anti-Phospho-MSK1 (Ser360) Rabbit Monoclonal Antibody

**Synonyms:** RPS6KA5; MSK1; Ribosomal protein S6 kinase alpha-5; S6K-alpha-5; 90 kDa ribosomal protein S6 kinase 5; Nuclear mitogen- and stress-activated protein kinase 1; RSK-like protein kinase; RSKL

**UNIPROT ID:** O75582

**Background:** Serine/threonine-protein kinase that is required for the mitogen or stress-induced phosphorylation of the transcription factors CREB1 and ATF1 and for the regulation of the transcription factors RELA, STAT3 and ETV1/ER81, and that contributes to gene activation by histone phosphorylation and functions in the regulation of inflammatory genes. Phosphorylates CREB1 and ATF1 in response to mitogenic or stress stimuli such as UV-C irradiation, epidermal growth factor (EGF) and anisomycin.

**Immunogen:** A synthetic phosphopeptide corresponding to residues surrounding Ser360 of human MSK1

**Applications:** WB, ICC/IF, IP

**Recommended Dilutions:** WB: 1/500-1/1000 IF: 1/50-1/200 IP: 1/20

**Host Species:** Rabbit

**Clonality:** Rabbit Monoclonal

**Clone ID:** R03-1G8

**MW:** Calculated MW: 90 kDa; Observed MW: 90 kDa

**Isotype:** IgG

**Purification:** Affinity Purified

**Species Reactivity:** Human, Mouse, Rat, Hamster

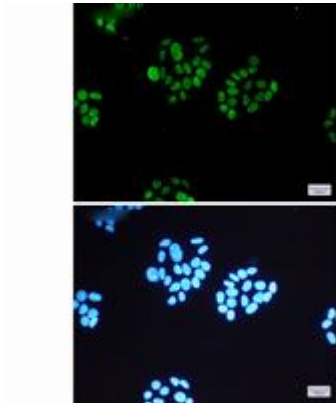
**Conjugation:** Unconjugated

**Modification:** Phosphorylated

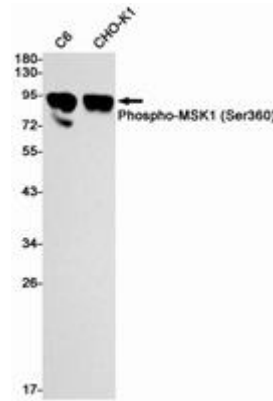
**Constituents:** PBS (without Mg<sup>2+</sup> and Ca<sup>2+</sup>), pH 7.3 containing 50% glycerol, 0.5% BSA and 0.02% sodium azide

**Research Areas:** Epigenetics, Histone phosphorylation

**Storage & Shipping:** Store at -20°C. Avoid repeated freezing and thawing



Immunocytochemistry analysis of MSK1 (Phospho-S360)(green) in HeLa using MSK1 (Phospho-S360) antibody, and DAPI(blue)



Western blot analysis of Phospho-MSK1 (Ser360) in C6, CHO-K1 lysates using Phospho-MSK1 (Ser360) antibody.