

PHOSPHO-OXSRI (THR185) RABBIT PAB

Cat.#: N225307

Product Name: Anti-Phospho-OXSRI (Thr185) Rabbit pAb

Synonyms: OSR1

UNIPROT ID: O95747

Background: Phosphorylates RELL1, RELL2 and RELT.

Immunogen: Synthetic peptide of human OXSRI

Applications: WB,IHC-P

Recommended Dilutions: WB: 1/500-1/1000 IHC: 1/50-1/100

Host Species: Rabbit

Clonality: Rabbit Polyclonal

Clone ID: -

MW: Calculated MW: 58 kDa; Observed MW: 65 kDa

Isotype: IgG

Purification: Affinity Purified

Species Reactivity: Human

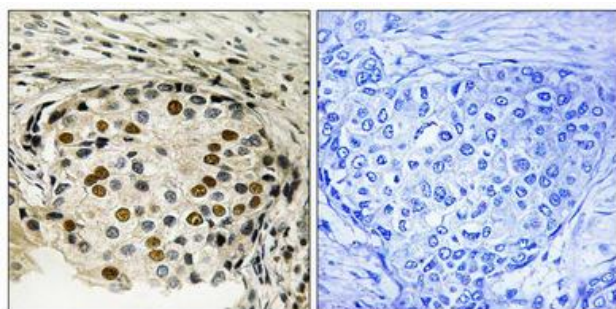
Conjugation: Unconjugated

Modification: Phosphorylated

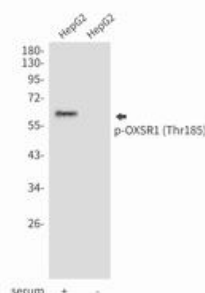
Constituents: PBS (without Mg²⁺ and Ca²⁺), pH 7.3 containing 50% glycerol, 0.5% BSA and 0.02% sodium azide

Research Areas: Signal Transduction

Storage & Shipping: Store at -20°C. Avoid repeated freezing and thawing



Immunohistochemistry analysis of paraffin-embedded Human breast carcinoma tissue using OSR1 (Phospho-Thr185) antibody. High-pressure and temperature Sodium Citrate pH 6.0 was used for antigen retrieval. Sample with blocking peptide on the right.



Western blot analysis of Phospho-OXSRI (Thr185) in HepG2 lysates using Phospho-OXSRI (Thr185) antibody.