

## PHOSPHO-PAK1/2/3 (SER144/SER141/SER154) RABBIT PAB

**Cat.#:** N225597

**Product Name:** Anti-Phospho-PAK1/2/3 (Ser144/Ser141/Ser154) Rabbit pAb

**Synonyms:** ADRB2; Alpha-PAK; CDC42/RAC effector kinase PAK-A; EC 2.7.11.1; P65-PAK; P68-PAK; PAK1 (phospho S144); PAK2 (phospho S141); PAK3 (phospho S154)

**UNIPROT ID:** O75914/Q13153/Q13177

**Background:** PAK proteins are critical effectors that link RhoGTPases to cytoskeleton reorganization and nuclear signaling. PAK proteins, a family of serine/threonine p21-activating kinases, include PAK1, PAK2, PAK3 and PAK4.

**Immunogen:** A synthesized peptide derived from human Phospho-PAK1/2/3 (S144+S141+S139)

**Applications:** WB,IHC-P,ICC/IF,IP,FC

**Recommended Dilutions:** WB: 1/500-1/1000 IHC: 1/50-1/100 IF: 1/50-1/200 IP: 1/20 FC: 1/50-1/100

**Host Species:** Rabbit

**Clonality:** Rabbit Polyclonal

**Clone ID:** -

**MW:** Calculated MW: 61 kDa; Observed MW: 65 kDa

**Isotype:** IgG

**Purification:** Affinity Chromatography

**Species Reactivity:** Human,Mouse,Rat

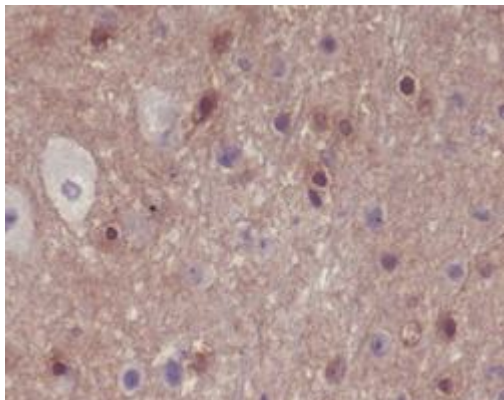
**Conjugation:** Unconjugated

**Modification:** Phosphorylated

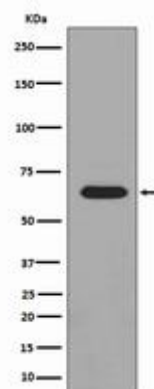
**Constituents:** PBS (without Mg<sup>2+</sup> and Ca<sup>2+</sup>), pH 7.3 containing 50% glycerol, 0.5% BSA and 0.02% sodium azide

**Research Areas:** Neuroscience

**Storage & Shipping:** Store at -20°C. Avoid repeated freezing and thawing



Immunohistochemistry analysis of paraffin-embedded mouse brain using Phospho-PAK1/2/3 (S144+S141+S139) antibody. High-pressure and temperature Sodium Citrate pH 6.0 was used for antigen retrieval.



Western blot analysis of Phospho-PAK1/2/3 in HeLa lysates treated with lambda phosphatase using Phospho-PAK1/2/3 (Ser144/Ser141/Ser154) antibody.