

## PHOSPHO-PDPK1 (SER241) RABBIT PAB

**Cat.#:** N225287

**Product Name:** Anti-Phospho-PDPK1 (Ser241) Rabbit pAb

**Synonyms:** PDPK1; PDK1; 3-phosphoinositide-dependent protein kinase 1; hPDK1

**UNIPROT ID:** O15530

**Background:** Phosphoinositide-dependent protein kinase 1 (PDK1) plays a central role in many signal transduction pathways including the activation of Akt and the PKC isoenzymes p70 S6 kinase and RSK. Through its effects on these kinases, PDK1 is involved in the regulation of a wide variety of processes, including cell proliferation, differentiation and apoptosis.

**Immunogen:** Synthetic peptide of human PDPK1

**Applications:** WB,IHC-P,ICC/IF

**Recommended Dilutions:** WB: 1/500-1/1000 IHC: 1/50-1/100 ICC: 1/100-1/200

**Host Species:** Rabbit

**Clonality:** Rabbit Polyclonal

**Clone ID:** -

**MW:** Calculated MW: 63 kDa; Observed MW: 63 kDa

**Isotype:** IgG

**Purification:** Affinity Purified

**Species Reactivity:** Human,Mouse,Rat

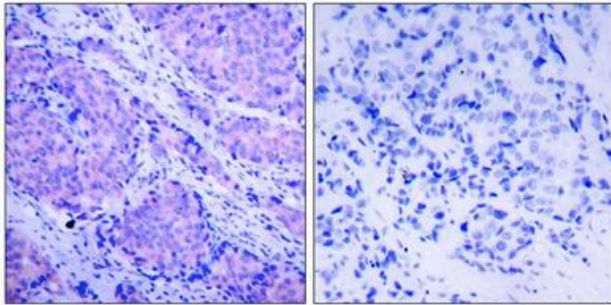
**Conjugation:** Unconjugated

**Modification:** Phosphorylated

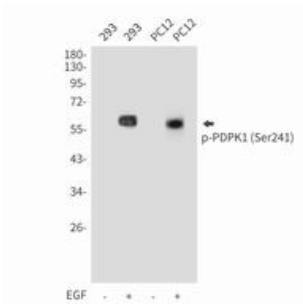
**Constituents:** PBS (without Mg<sup>2+</sup> and Ca<sup>2+</sup>), pH 7.3 containing 50% glycerol, 0.5% BSA and 0.02% sodium azide

**Research Areas:** Signal Transduction

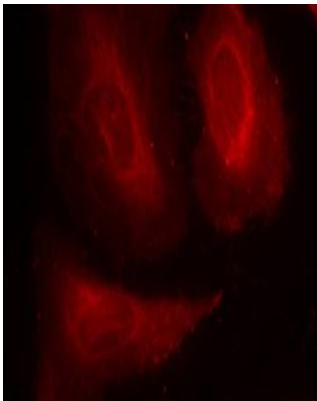
**Storage & Shipping:** Store at -20°C. Avoid repeated freezing and thawing



Immunohistochemistry analysis of paraffin-embedded Human breast carcinoma tissue using PDK1(Phospho-Ser241) antibody. High-pressure and temperature Sodium Citrate pH 6.0 was used for antigen retrieval. Sample with blocking peptide on the right.



Western blot analysis of Phospho-PDK1 (Ser241) in 293, PC-12 lysates using Phospho-PDK1 (Ser241) antibody.



Immunofluorescence analysis of Phospho-PDK1 (Ser241) in HeLa cells using PDK1(Phospho-Ser241) antibody(red).