

PHOSPHO-PKC ALPHA (THR638) RABBIT MAB

Cat.#: N261726

Product Name: Anti-Phospho-PKC alpha (Thr638) Rabbit Monoclonal Antibody

Synonyms: PRKCA; PKCA; PRKACA; Protein kinase C alpha type; PKC-A; PKC-alpha

UNIPROT ID: P17252

Background: PKC alpha is an AGC kinase of the PKC family. A classical PKC downstream of many mitogenic and receptors. Classical PKCs are calcium-dependent enzymes that are activated by phosphatidylserine, diacylglycerol and phorbol esters.

Immunogen: A synthetic phosphopeptide corresponding to residues surrounding Thr638 of human PKC alpha

Applications: WB,IHC-P,IP

Recommended Dilutions: WB: 1/500-1/1000 IHC: 1/50-1/100 IP: 1/20

Host Species: Rabbit

Clonality: Rabbit Monoclonal

Clone ID: R09-7C7

MW: Calculated MW: 77 kDa; Observed MW: 80 kDa

Isotype: IgG

Purification: Affinity Purified

Species Reactivity: Human,Mouse,Rat

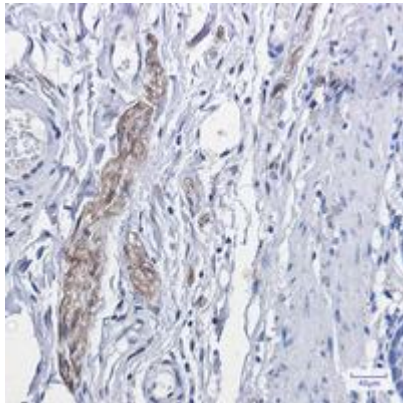
Conjugation: Unconjugated

Modification: Phosphorylated

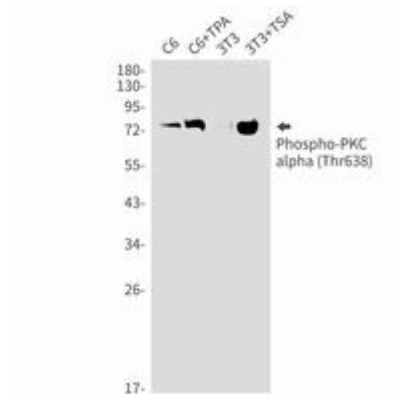
Constituents: PBS (without Mg²⁺ and Ca²⁺), pH 7.3 containing 50% glycerol, 0.5% BSA and 0.02% sodium azide

Research Areas: Epigenetics, Histone phosphorylation

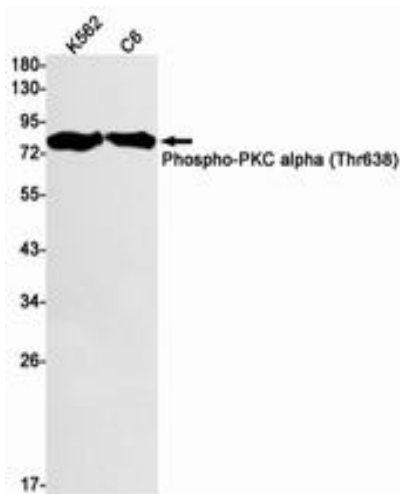
Storage & Shipping: Store at -20°C. Avoid repeated freezing and thawing



Immunohistochemistry analysis of paraffin-embedded Human colon cancer using Phospho-PKC alpha (Thr638) antibody. High-pressure and temperature Sodium Citrate pH 6.0 was used for antigen retrieval.



Western blot analysis of Phospho-PKC alpha (Thr638) in C6, C6+TPA, 3T3, 3T3+TSA lysates using Phospho-PKC alpha (Thr638) antibody.



Western blot analysis of Phospho-PKC alpha (Thr638) in K562, C6 lysates using Phospho-PKC alpha (Thr638) antibody.