

PHOSPHO-PKC ALPHA (THR638) RABBIT PAB

Cat.#: N225772

Product Name: Anti-Phospho-PKC alpha (Thr638) Rabbit pAb

Synonyms: PRKCA; PKCA; PRKACA; Protein kinase C alpha type; PKC-A; PKC-alpha

UNIPROT ID: P17252

Background: PKC alpha is an AGC kinase of the PKC family. A classical PKC downstream of many mitogenic and receptors. Classical PKCs are calcium-dependent enzymes that are activated by phosphatidylserine, diacylglycerol and phorbol esters.

Immunogen: A synthesized peptide derived from human Phospho-PKC alpha (T638)

Applications: WB,IHC-P,ICC/IF,IP

Recommended Dilutions: WB: 1/500-1/1000 IHC: 1/50-1/100 IF: 1/50-1/200 IP: 1/20

Host Species: Rabbit

Clonality: Rabbit Polyclonal

Clone ID: -

MW: Calculated MW: 77 kDa; Observed MW: 80 kDa

Isotype: IgG

Purification: Affinity Chromatography

Species Reactivity: Human,Mouse,Rat

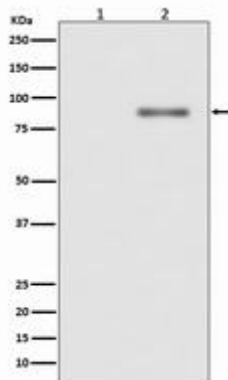
Conjugation: Unconjugated

Modification: Phosphorylated

Constituents: PBS (without Mg²⁺ and Ca²⁺), pH 7.3 containing 50% glycerol, 0.5% BSA and 0.02% sodium azide

Research Areas: Signal Transduction

Storage & Shipping: Store at -20°C. Avoid repeated freezing and thawing



Western blot analysis of Phospho-PKC alpha (T638) in (1) Jurkat lysates treated with TPA; (2) Jurkat lysates using Phospho-PKC alpha (Thr638) antibody.