

PHOSPHO-PKC DELTA (SER299) RABBIT MAB

Cat.#: N263185

Product Name: Anti-Phospho-PKC delta (Ser299) Rabbit Monoclonal Antibody

Synonyms: Protein kinase C delta type; Tyrosine-protein kinase PRKCD; nPKC-delta

UNIPROT ID: Q05655

Background: Protein kinase C (PKC) is a family of serine- and threonine-specific protein kinases that can be activated by calcium and the second messenger diacylglycerol. PKC family members phosphorylate a wide variety of protein targets and are known to be involved in diverse cellular signaling pathways.

Immunogen: A synthetic phosphopeptide corresponding to residues surrounding Ser299 of human PKC delta

Applications: WB,IHC-P,IP

Recommended Dilutions: WB: 1/500-1/1000 IHC: 1/50-1/100 IP: 1/20

Host Species: Rabbit

Clonality: Rabbit Monoclonal

Clone ID: R06-4A5

MW: Calculated MW: 78 kDa; Observed MW: 78 kDa

Isotype: IgG

Purification: Affinity Purified

Species Reactivity: Human

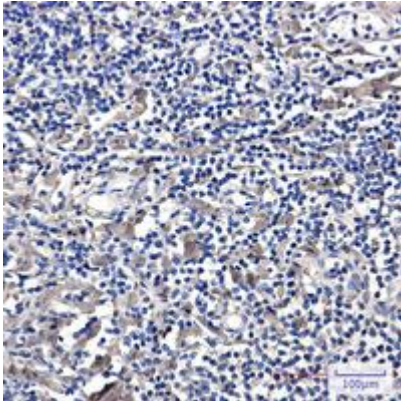
Conjugation: Unconjugated

Modification: Phosphorylated

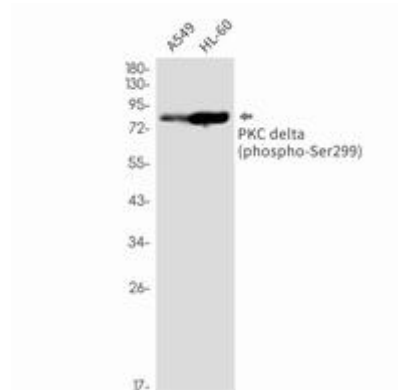
Constituents: PBS (without Mg²⁺ and Ca²⁺), pH 7.3 containing 50% glycerol, 0.5% BSA and 0.02% sodium azide

Research Areas: Signal Transduction

Storage & Shipping: Store at -20°C. Avoid repeated freezing and thawing



Immunohistochemistry analysis of paraffin-embedded Human tonsil using PKC delta (Phospho-Ser299) antibody. High-pressure and temperature Sodium Citrate pH 6.0 was used for antigen retrieval.



Western blot analysis of Phospho-PKC delta (Ser299) in A549, HL-60 lysates using Phospho-PKC delta (Ser299) antibody.