

## PHOSPHO-PKC EPSILON (SER729) RABBIT PAB

**Cat.#:** N225514

**Product Name:** Anti-Phospho-PKC epsilon (Ser729) Rabbit pAb

**Synonyms:** nPKC epsilon; PKCE; Pkcea; PRKCE; Protein kinase C epsilon; Protein kinase C epsilon type

**UNIPROT ID:** Q02156

**Background:** protein kinase C epsilon (PRKCE) Homo sapiens Protein kinase C (PKC) is a family of serine- and threonine-specific protein kinases that can be activated by calcium and the second messenger diacylglycerol. PKC family members phosphorylate a wide variety of protein targets and are known to be involved in diverse cellular signaling pathways. PKC family members also serve as major receptors for phorbol esters, a class of tumor promoters. Each member of the PKC family has a specific expression profile and is believed to play a distinct role in cells. The protein encoded by this gene is one of the PKC family members.

**Immunogen:** Synthesized peptide derived from human PKC epsilon (Phospho-S729). AA range:688-737

**Applications:** WB,IHC-P,ELISA

**Recommended Dilutions:** WB: 1/500-1/1000 IHC: 1/50-1/100 ELISA: 1/10000

**Host Species:** Rabbit

**Clonality:** Rabbit Polyclonal

**Clone ID:** -

**MW:** Calculated MW: 84 kDa; Observed MW: 84 kDa

**Isotype:** IgG

**Purification:** Affinity Purified

**Species Reactivity:** Human,Mouse,Rat

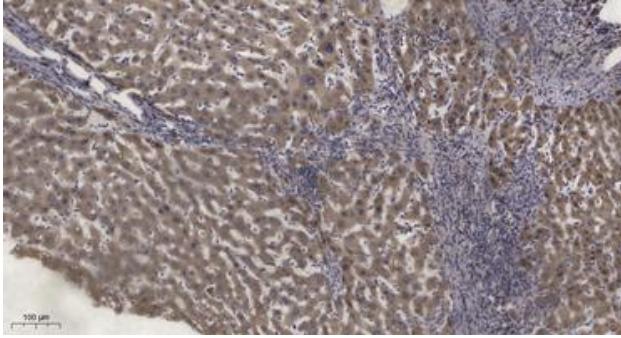
**Conjugation:** Unconjugated

**Modification:** Phosphorylated

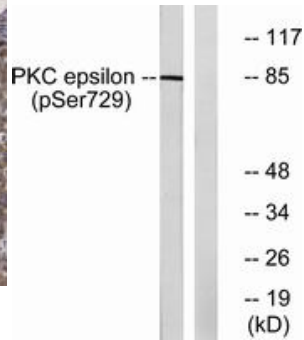
**Constituents:** PBS (without Mg<sup>2+</sup> and Ca<sup>2+</sup>), pH 7.3 containing 50% glycerol, 0.5% BSA and 0.02% sodium azide

**Research Areas:** Signal Transduction

**Storage & Shipping:** Store at -20°C. Avoid repeated freezing and thawing



Immunohistochemistry analysis of paraffin-embedded Human Liver Cancer using Phospho-PKC epsilon (Ser729) antibody. High-pressure and temperature Tris-EDTA pH 9.0 was used for antigen retrieval.



Western blot analysis of Phospho-PKC epsilon (Ser729) in HeLa lysates using Phospho-PKC epsilon (Ser729) antibody.