

PHOSPHO-PKC (SER660) RABBIT MAB

Cat.#: N263183

Product Name: Anti-Phospho-PKC (Ser660) Rabbit Monoclonal Antibody

Synonyms: PRKCA; PKCA; PRKACA; Protein kinase C alpha type; PKC-A; PKC-alpha

UNIPROT ID: P17252/P05771/Q05655/Q02156/P24723/Q04759

Background: PKC alpha is an AGC kinase of the PKC family. A classical PKC downstream of many mitogenic and receptors. Classical PKCs are calcium-dependent enzymes that are activated by phosphatidylserine, diacylglycerol and phorbol esters.

Immunogen: A synthetic phosphopeptide corresponding to residues surrounding Ser660 of human PKC

Applications: WB,IHC-P

Recommended Dilutions: WB: 1/500-1/1000 IHC: 1/50-1/100

Host Species: Rabbit

Clonality: Rabbit Monoclonal

Clone ID: R08-0H5

MW: Calculated MW: 77 kDa; Observed MW: 78-85 kDa

Isotype: IgG

Purification: Affinity Purified

Species Reactivity: Human,Rat

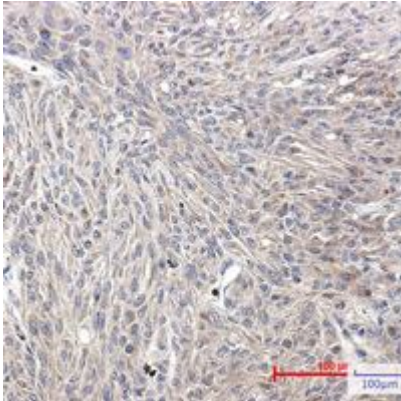
Conjugation: Unconjugated

Modification: Phosphorylated

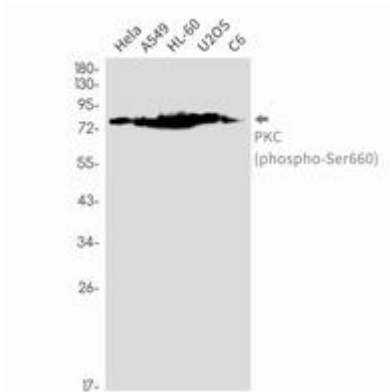
Constituents: PBS (without Mg²⁺ and Ca²⁺), pH 7.3 containing 50% glycerol, 0.5% BSA and 0.02% sodium azide

Research Areas: Signal Transduction

Storage & Shipping: Store at -20°C. Avoid repeated freezing and thawing



Immunohistochemistry analysis of paraffin-embedded Human Brain using PKC (Phospho-Ser660) antibody. High-pressure and temperature Sodium Citrate pH 6.0 was used for antigen retrieval.



Western blot analysis of PKC (Phospho-Ser660) in Hela, A549, HL-60, U2OS, C6 lysates using Phospho-PKC (Ser660) antibody.