

## PHOSPHO-PKC ZETA/LAMBDA (THR410/THR412) RABBIT MAB

**Cat.#:** N263186

**Product Name:** Anti-Phospho-PKC zeta/lambda (Thr410/Thr412) Rabbit Monoclonal Antibody

**Synonyms:** PRKCG; PKCG; Protein kinase C gamma type; PKC-gamma

**UNIPROT ID:** P05129

**Background:** This is a calcium-activated, phospholipid-dependent, serine- and threonine-specific enzyme.

**Immunogen:** A synthetic phosphopeptide corresponding to residues surrounding Thr410 of human PKC zeta

**Applications:** WB,IHC-P

**Recommended Dilutions:** WB: 1/500-1/1000 IHC: 1/50-1/100

**Host Species:** Rabbit

**Clonality:** Rabbit Monoclonal

**Clone ID:** R03-3D0

**MW:** Calculated MW: 78 kDa; Observed MW: 78 kDa

**Isotype:** IgG

**Purification:** Affinity Purified

**Species Reactivity:** Human,Mouse

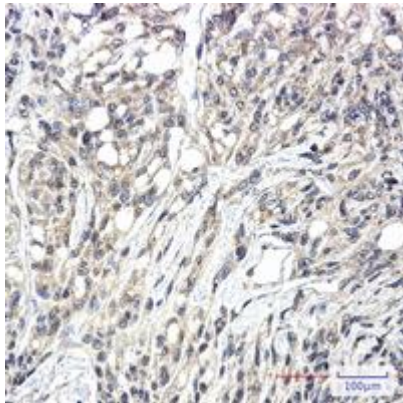
**Conjugation:** Unconjugated

**Modification:** Phosphorylated

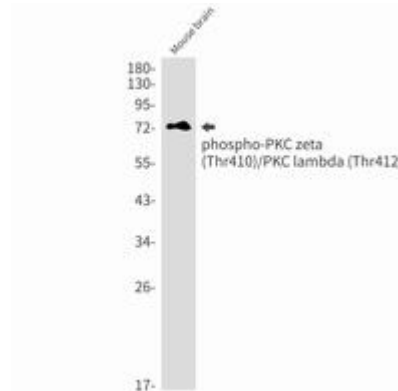
**Constituents:** PBS (without Mg<sup>2+</sup> and Ca<sup>2+</sup>), pH 7.3 containing 50% glycerol, 0.5% BSA and 0.02% sodium azide

**Research Areas:** Signal Transduction

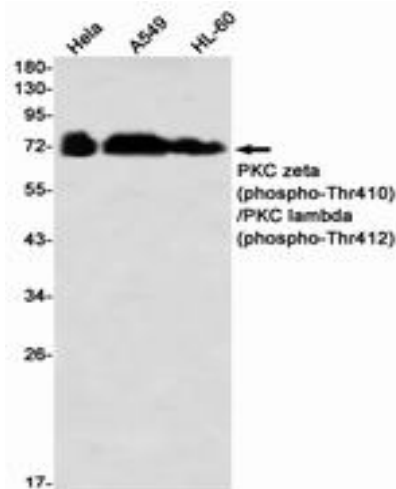
**Storage & Shipping:** Store at -20°C. Avoid repeated freezing and thawing



Immunohistochemistry analysis of paraffin-embedded Human Brain using PKC zeta (Phospho-Thr410)/PKC lambda (Phospho-Thr412) antibody. High-pressure and temperature Sodium Citrate pH 6.0 was used for antigen retrieval.



Western blot analysis of Phospho-PKC zeta (Thr410)/PKC lambda (Thr412) in mouse brain lysates using Phospho-PKC zeta/lambda (Thr410/Thr412) antibody.



Western blot analysis of PKC zeta (Phospho-Thr410)/PKC lambda (Phospho-Thr412) in HeLa, A549, HL-60 lysates using PKC zeta (Phospho-Thr410)/PKC lambda (Phospho-Thr412) antibody.