

PHOSPHO-PRC1 (THR481) RABBIT MAB

Cat.#: N262752

Product Name: Anti-Phospho-PRC1 (Thr481) Rabbit Monoclonal Antibody

Synonyms: Protein regulator of cytokinesis 1

UNIPROT ID: O43663

Background: Cross-links antiparrallel microtubules at an average distance of 35 nM. Essential for controlling the spatiotemporal formation of the midzone and successful cytokinesis. Required for KIF14 localization to the central spindle and midbody.

Immunogen: A synthetic phosphopeptide corresponding to residues surrounding Thr481 of human PRC1

Applications: WB,IHC-F,IHC-P,ICC/IF

Recommended Dilutions: WB: 1/500-1/1000 IHC: 1/50-1/100 IF: 1/50-1/200

Host Species: Rabbit

Clonality: Rabbit Monoclonal

Clone ID: R06-2A3

MW: Calculated MW: 72 kDa; Observed MW: 72 kDa

Isotype: IgG

Purification: Affinity Purified

Species Reactivity: Human

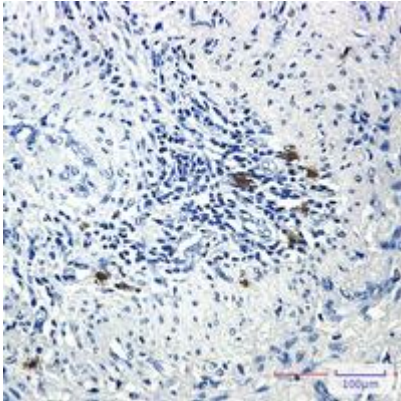
Conjugation: Unconjugated

Modification: Phosphorylated

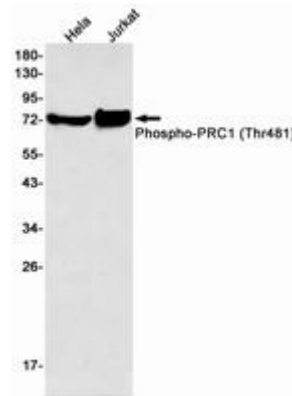
Constituents: PBS (without Mg²⁺ and Ca²⁺), pH 7.3 containing 50% glycerol, 0.5% BSA and 0.02% sodium azide

Research Areas: Cell Biology

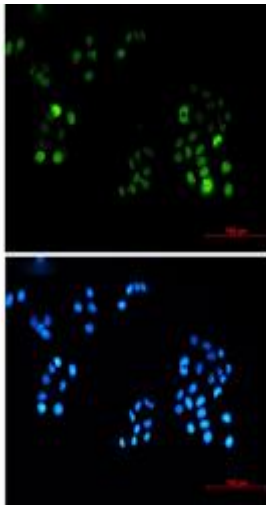
Storage & Shipping: Store at -20°C. Avoid repeated freezing and thawing



Immunohistochemistry analysis of paraffin-embedded Human lung cancer using PRC1 (Phospho-Thr481) antibody. High-pressure and temperature Sodium Citrate pH 6.0 was used for antigen retrieval.



Western blot analysis of Phospho-PRC1 (Thr481) in Hela, Jurkat lysates using Phospho-PRC1 (Thr481) antibody.



Immunocytochemistry analysis of Phospho-PRC1 (Thr481) (green) in Hela using Phospho-PRC1 (Thr481) antibody, and DAPI (blue)