

PHOSPHO-PRKD2 (SER876) RABBIT MAB

Cat.#: N262731

Product Name: Anti-Phospho-PRKD2 (Ser876) Rabbit Monoclonal Antibody

Synonyms: PRKD2; PKD2; HSPC187; Serine/threonine-protein kinase D2; nPKC-D2

UNIPROT ID: Q9BZL6

Background: Converts transient diacylglycerol (DAG) signals into prolonged physiological effects, downstream of PKC. Involved in resistance to oxidative stress.

Immunogen: A synthetic phosphopeptide corresponding to residues surrounding Ser876 of human PKD2

Applications: WB,IP

Recommended Dilutions: WB: 1/500-1/1000 IP: 1/20

Host Species: Rabbit

Clonality: Rabbit Monoclonal

Clone ID: R06-4D1

MW: Calculated MW: 97 kDa; Observed MW: 105 kDa

Isotype: IgG

Purification: Affinity Purified

Species Reactivity: Human

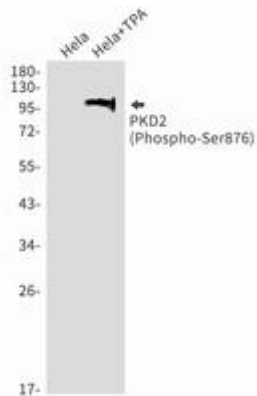
Conjugation: Unconjugated

Modification: Phosphorylated

Constituents: PBS (without Mg²⁺ and Ca²⁺), pH 7.3 containing 50% glycerol, 0.5% BSA and 0.02% sodium azide

Research Areas: Signal Transduction

Storage & Shipping: Store at -20°C. Avoid repeated freezing and thawing



Western blot analysis of PKD2 (Phospho-Ser876) in HeLa, HeLa+TPA lysates using Phospho-PRKD2 (Ser876) antibody.