

PHOSPHO-PROGESTERONE RECEPTOR (SER190) RABBIT MAB

Cat.#: N262762

Product Name: Anti-Phospho-Progesterone Receptor (Ser190) Rabbit Monoclonal Antibody

Synonyms: PGR; NR3C3; Progesterone receptor; PR; Nuclear receptor subfamily 3 group C member 3

UNIPROT ID: P06401

Background: Progesterone plays a central role in the reproductive events associated with the establishment and maintenance of pregnancy. Progesterone receptor, a member of the steroid receptor superfamily, mediates the physiologic effects of progesterone.

Immunogen: A synthetic phosphopeptide corresponding to residues surrounding Ser190 of human Progesterone Receptor

Applications: WB,IHC-F,IHC-P,ICC/IF,IP

Recommended Dilutions: WB: 1/500-1/1000 IHC: 1/50-1/100 IF: 1/50-1/200 IP: 1/20

Host Species: Rabbit

Clonality: Rabbit Monoclonal

Clone ID: R08-5E7

MW: Calculated MW: 99 kDa; Observed MW: 90,118 kDa

Isotype: IgG

Purification: Affinity Purified

Species Reactivity: Human

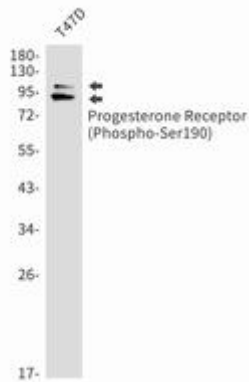
Conjugation: Unconjugated

Modification: Phosphorylated

Constituents: PBS (without Mg²⁺ and Ca²⁺), pH 7.3 containing 50% glycerol, 0.5% BSA and 0.02% sodium azide

Research Areas: Epigenetics and Nuclear Signaling

Storage & Shipping: Store at -20°C. Avoid repeated freezing and thawing



Western blot analysis of Progesterone Receptor (Phospho-Ser190) in T47D lysates using Phospho-Progesterone Receptor (Ser190) antibody.