

PHOSPHO-PTP1B (SER352) RABBIT MAB

Cat.#: N261720

Product Name: Anti-Phospho-PTP1B (Ser352) Rabbit Monoclonal Antibody

Synonyms: PTPN1; PTP1B; Tyrosine-protein phosphatase non-receptor type 1; Protein-tyrosine phosphatase 1B; PTP-1B

UNIPROT ID: P18031

Background: The protein encoded by this gene is the founding member of the protein tyrosine phosphatase (PTP) family, which was isolated and identified based on its enzymatic activity and amino acid sequence. PTPs catalyze the hydrolysis of the phosphate monoesters specifically on tyrosine residues.

Immunogen: A synthetic phosphopeptide corresponding to residues surrounding Ser352 of human PTP1B

Applications: WB, ICC/IF, IP

Recommended Dilutions: WB: 1/500-1/1000 IF: 1/50-1/200 IP: 1/20

Host Species: Rabbit

Clonality: Rabbit Monoclonal

Clone ID: R04-1F2

MW: Calculated MW: 50 kDa; Observed MW: 50 kDa

Isotype: IgG

Purification: Affinity Purified

Species Reactivity: Human

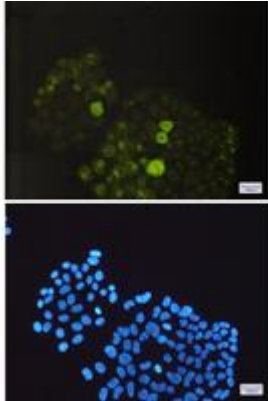
Conjugation: Unconjugated

Modification: Phosphorylated

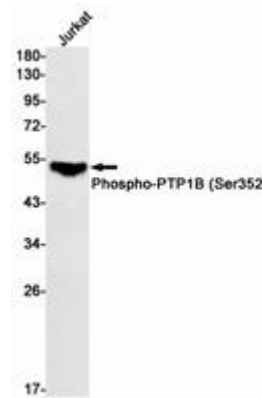
Constituents: PBS (without Mg²⁺ and Ca²⁺), pH 7.3 containing 50% glycerol, 0.5% BSA and 0.02% sodium azide

Research Areas: Signal Transduction

Storage & Shipping: Store at -20°C. Avoid repeated freezing and thawing



Immunocytochemistry analysis of Phospho-PTP1B (Ser352)(green) in HeLa using Phospho-PTP1B (Ser352) antibody, and DAPI(blue)



Western blot analysis of Phospho-PTP1B (Ser352) in Jurkat lysates using Phospho-PTP1B (Ser352) antibody.