

PHOSPHO-PTP1B (SER378) RABBIT MAB

Cat.#: N263188

Product Name: Anti-Phospho-PTP1B (Ser378) Rabbit Monoclonal Antibody

Synonyms: PTPN1; PTP1B; Tyrosine-protein phosphatase non-receptor type 1; Protein-tyrosine phosphatase 1B; PTP-1B

UNIPROT ID: P18031

Background: The protein encoded by this gene is the founding member of the protein tyrosine phosphatase (PTP) family, which was isolated and identified based on its enzymatic activity and amino acid sequence. PTPs catalyze the hydrolysis of the phosphate monoesters specifically on tyrosine residues.

Immunogen: A synthetic phosphopeptide corresponding to residues surrounding Ser378 of human PTP1B

Applications: WB,IHC-P

Recommended Dilutions: WB: 1/500-1/1000 IHC: 1/50-1/100

Host Species: Rabbit

Clonality: Rabbit Monoclonal

Clone ID: R08-5F7

MW: Calculated MW: 50 kDa; Observed MW: 50 kDa

Isotype: IgG

Purification: Affinity Purified

Species Reactivity: Human

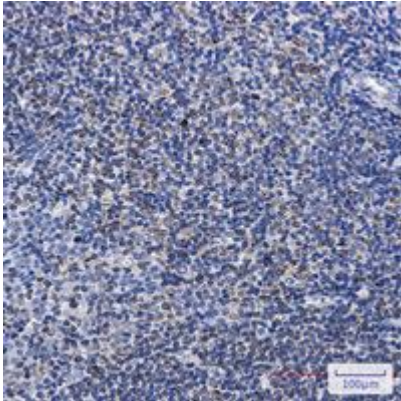
Conjugation: Unconjugated

Modification: Phosphorylated

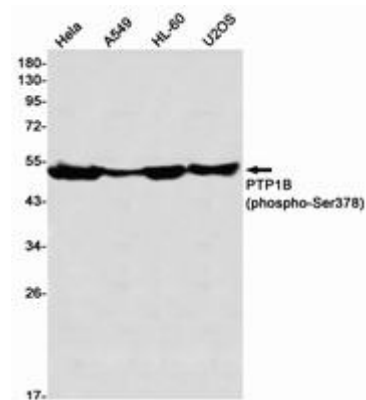
Constituents: PBS (without Mg²⁺ and Ca²⁺), pH 7.3 containing 50% glycerol, 0.5% BSA and 0.02% sodium azide

Research Areas: Signal Transduction

Storage & Shipping: Store at -20°C. Avoid repeated freezing and thawing



Immunohistochemistry analysis of paraffin-embedded Human tonsil using PTP1B (Phospho-Ser378) antibody. High-pressure and temperature Sodium Citrate pH 6.0 was used for antigen retrieval.



Western blot analysis of PTP1B (Phospho-Ser378) in HeLa, A549, HL-60, U2OS lysates using Phospho-PTP1B (Ser378) antibody.