

## PHOSPHO-PTS (SER19) RABBIT MAB

**Cat.#:** N263189

**Product Name:** Anti-Phospho-PTS (Ser19) Rabbit Monoclonal Antibody

**Synonyms:** PTPS

**UNIPROT ID:** Q03393

**Background:** Involved in the biosynthesis of tetrahydrobiopterin, an essential cofactor of aromatic amino acid hydroxylases.

**Immunogen:** A synthetic phosphopeptide corresponding to residues surrounding Ser19 of human PTS/PTPS

**Applications:** WB,IHC-P,IP

**Recommended Dilutions:** WB: 1/500-1/1000 IHC: 1/50-1/100 IP: 1/20

**Host Species:** Rabbit

**Clonality:** Rabbit Monoclonal

**Clone ID:** R05-7G8

**MW:** Calculated MW: 16 kDa; Observed MW: 16 kDa

**Isotype:** IgG

**Purification:** Affinity Purified

**Species Reactivity:** Human

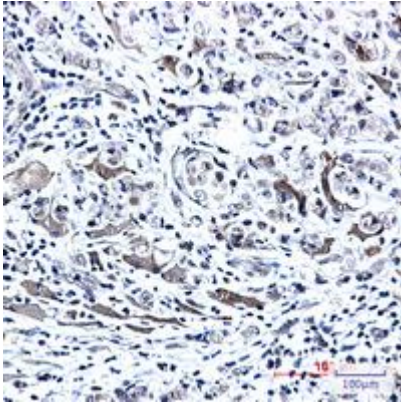
**Conjugation:** Unconjugated

**Modification:** Phosphorylated

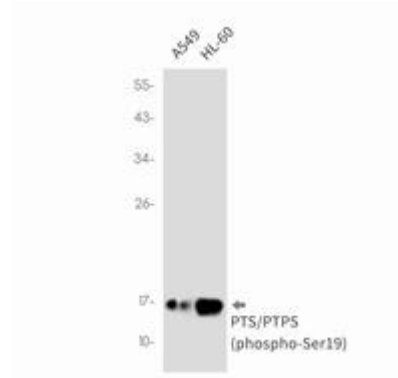
**Constituents:** PBS (without Mg<sup>2+</sup> and Ca<sup>2+</sup>), pH 7.3 containing 50% glycerol, 0.5% BSA and 0.02% sodium azide

**Research Areas:** Neuroscience

**Storage & Shipping:** Store at -20°C. Avoid repeated freezing and thawing



Immunohistochemistry analysis of paraffin-embedded Human breast cancer using Phospho-PTS/PTPS (Ser19) antibody. High-pressure and temperature Sodium Citrate pH 6.0 was used for antigen retrieval.



Western blot analysis of PTS/PTPS (Phospho-Ser19) in A549, HL-60 lysates using Phospho-PTS (Ser19) antibody.